



Sold and Serviced by:

www.agcoparts.com



Hitch Pins • Clip Pins • Clevis Pins • Lynch Pins • Top Links • Ball Sockets
 Wheel Spinners • Utility Jacks • Log Splitters • Post Hole Diggers • And More

About AGCO Parts Division

AGCO Parts Division, headquartered in Batavia, Illinois, (www.agcoparts.com) is the original equipment parts and service division of AGCO Corporation. AGCO Parts supports a network of 1,650 dealers in the United States and Canada with over a million part numbers carried in nine Parts Distribution Centers. Equipment supported by AGCO® Parts include Ag-Chem® RoGator® and TerraGator®, AGCO®, Challenger®, Fendt®, Gleaner®, Hesston®, Massey Ferguson®, New Idea®, Spra-Coupe®, Sunflower®, Valtra® and White™ Planters. Heritage® parts are available for tractors at least 10 years old, including: Allis-Chalmers, Cockshutt®, Ferguson™, Massey-Harris™, Massey Ferguson®, Minneapolis-Moline®, Oliver® Hart-Parr® and Oliver®, and White™. Heritage parts are also available for combines that include MF®, Gleaner® and White™ as well as New Idea® Uni-Harvestors. All AGCO Parts dealers have the ability to sell Heritage Parts.



About AGCO

Founded in 1990, AGCO Corporation (NYSE: AG) (www.agcocorp.com) is a global manufacturer of agricultural equipment and related replacement parts. AGCO offers a full product line including tractors, combines, hay tools, sprayers, forage, tillage equipment and implements, which are distributed through more than 3,200 independent dealers and distributors in more than 140 countries worldwide. AGCO products include the following well-known brands: AGCO®, Challenger®, Fendt®, Gleaner®, Hesston®, Massey Ferguson®, New Idea®, RoGator®, Spra-Coupe®, Sunflower®, Terra-Gator®, Valtra®, and White™ Planters. AGCO provides retail financing through AGCO Finance. The company is headquartered in Duluth, Georgia.

Dealer Return Policy

- ▲ All returns must be authorized by AGCO. PDC stocked returns are subject to a 15% restocking fee or up to \$25.00.
- ▲ For return instructions, please call 1-800-728-1773.
- ▲ Any claims for shipping or packing errors must be filed with AGCO within ten (10) days after receipt of shipments.

Warranty Policy

- ▲ All warranty claims must be authorized by AGCO Warranty Department, please call 1-800-558-0774.
- ▲ Repair or replacement of defective product(s) subject to inspection.
- ▲ Credit will be issued through AGCO to the dealer.

Order Placement

- ▲ AGCO Solutions® On-line using Promotional Order Class 11.
- ▲ Be sure to specify Promo 228.

About SpeeCo

All products in this catalog are manufactured for AGCO by SpeeCo.

SpeeCo, a brand of Special Products Co., located in scenic Golden, Colorado, is a global leader in tractor 3-point linkage parts and farm accessories. In addition, we are a leading manufacturer of tractor-mounted quick hitches, post hole diggers and hydraulic log splitters.

Founded in 1957, our primary objective for over 50 years has been to provide our customers with a complete and profitable selection of quality merchandise at competitive prices. We take great pride in being a long-term supplier to many of America's major tractor manufacturers, implement manufacturers and national farm equipment retailers.

We continue to build upon a large knowledge base of this industry created by our many years of engineering and manufacturing expertise. Our sales and customer service personnel, supported by a staff of professional engineers, welcome the opportunity to assist you in your special needs.

Product Sections

Top Links	2	Lynch Pins	20	Yoke Accessories	39
Top Link Repair Ends	2	Locking Pins	21	Shaft Set Collars	39
Top Link Ball Sockets	3	Detent Pins	22	Gate Accessories	40-41
Lift Arm Ball Sockets	4	Hardware & Fasteners	23-27	Fence Accessories	42
Replacement Balls	5	Clevises	28-30	Pulleys	43
Weld-on Ball Ends	6	Drawbar Grab Hook	30	Roller Chain Breaker	44
Top Link Bushings	7	T-Handle Clevis Pins	30	Drum Pump	44
Lift Arm Bushings	7	Wheel Spinners	31	Bead Breaker	44
Swinging Drawbar	8	Cylinder Stroke Controls	31	Fuel Strainers	45
Lift Arms	8	Cow Bells	32	Displays & Assortments	46-48
Stabilizer Arms & Brackets	9	Hay Hooks	32	Log Splitters	49-50
Stabilizer Pins	10	Hydraulic Cylinder Pins	33	Log Splitter Accessories	51
Clevis Draw Pins	10	Ratchet Jacks	33	Log Splitter Parts	52
Lift Arm Pins	11	Utility Jacks	34-35	Post Hole Diggers	53-55
Top Link Pins	12	Raincaps	36	Front Mount Q.H.	56
Hitch Pins	12-17	Tool Boxes	36	UltraFork	56
“R” Clip Pins	18	Miscellaneous	37	Index	57-60
Twist Clip Pins	18	Harrow Teeth	38		
Universal Clevis Pins	19	Shaft Set Collars	39		

**Farpak Clamshell
Packaging
Type “C”**

Sell more product in less space. Display more product in less space. Clamshells stay clean and attractive throughout shipping and shelf life and can be easily resealed at the store.

**Farpak Bagged
Packaging For Small Parts
Type “B”**

Displays hard-to-label parts with product and size information, as well as UPC bar code. Bags display on peg hooks for better visibility.

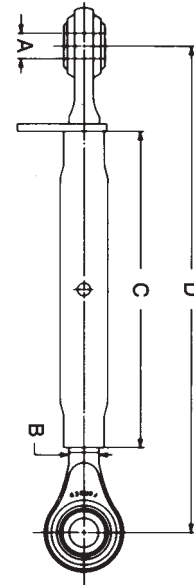
Please note that the parts shown in **Bold/Red** can be ordered on a stock, daily or priority order out of the PDC or on a direct ship order.

Forged Top Links

Quality forged top links and repair ends available in Category 0, 1, 1 & 2 combination, 2 and 3 sizes. All top links are yellow zinc plated. The ends are clear zinc plated.



Part Number	Cat.	Type	A Pin Hole Size	B Threads	C Body Length	D Closed Length	Open Length	Weight (Lbs.)
SP1090700	0	Std.	5/8"	3/4" NC	9-1/2"	13"	18"	2.7
FX03470	0	Std.	5/8"	3/4" NC	7-5/8"	11"	16"	2.5
FX00330	1	Std.	1/2"	1"	11-1/4"	16"	23"	6.70
FX00480	1	Std.	3/4"	1-1/8" NC	13-1/4"	17"	26"	7.4
FX00332	1	Std.	3/4"	1-1/8" NC	16"	21"	31"	7.6
FX00335	1	Std.	3/4"	1-1/8" NC	20"	25"	35"	9.1
SP1060700	1	Std.	3/4"	1-1/8" NC	24"	29"	39"	8.9
FX00338	1 & 2	Std.	3/4" & 1"	1-1/8" NC	16"	21"	32"	9.1
FX00339	1 & 2	Std.	3/4" & 1"	1-1/8" NC	20"	24-3/4"	35"	10.1
FX00486	2	Std.	1"	1-1/8" NC	13"	18"	27-3/4"	9.1
FX00340	2	Std.	1"	1-1/8" NC	16"	21"	31"	10.0
FX00337	2	Std.	1"	1-1/8" NC	20"	25"	37"	10.0
FX03473	2	H.D.	1"	1-1/4" NC	15-3/4"	20"	30"	10.7
FX03474	2	H.D.	1"	1-1/4" NC	19"	24-1/2"	35-1/2"	15.9
FX03477	3	H.D.	1-1/4"	1-3/8" NC	19"	25-1/2"	36-1/2"	23.0

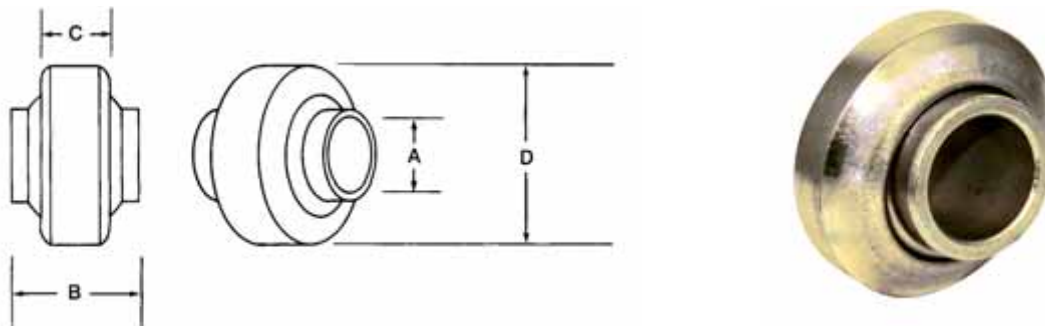


Top Link Repair Ends

Part Number	Cat.	Type	Pin Hole Size	Thread Diam.	Thread Length	Overall Length	Weight (Lbs.)
FX00342	1	Forged	3/4"	1-1/8" NC (LH)	6"	10"	2.4
FX00343	1	Forged	3/4"	1-1/8" NC (RH)	6"	10"	2.4
FX03246	2	Forged	1"	1-1/4" NC (LH)	5-1/2"	10"	3.0
FX03244	2	Forged	1"	1-1/4" NC (RH)	5-1/2"	10"	3.0
FX00347	2	Forged	1"	1-1/8" NC (RH)	6-1/2"	11"	3.0
FX00346	2	Forged	1"	1-1/8" NC (LH)	6-1/2"	11"	3.0
FX04950	3	Forged	1-1/4"	1-3/8" NC (RH)	7-1/4"	12-1/8"	8.0
FX04951	3	Forged	1-1/4"	1-3/8" NC (LH)	7-1/4"	12-1/8"	8.0

Top Link Ball Sockets

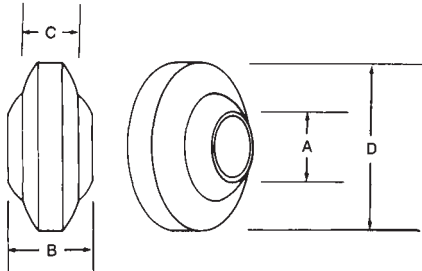
Weld-on top link ball sockets to fit Category 0 through Category 3 tractors. Available in black oxide and yellow zinc dichromate plated versions.



Part Number	Cat.	Description	A Pin Hole Size	B Length Thru Bore	C Sleeve Width	D Sleeve O.D.	Bulk Weight (Lbs.)
SP2022500	0	Standard duty; black oxide	5/8"	1"	3/4"	2"	0.6
SP2022600	0	Standard duty; plated	5/8"	1"	3/4"	2"	0.6
SP2010300	1	Standard duty; black oxide	3/4"	1-5/8"	3/4"	2"	0.6
SP2010600	1	Standard duty; plated	3/4"	1-5/8"	3/4"	2"	0.6
SP2010200	1	Heavy duty; black oxide	3/4"	1-5/8"	7/8"	2-1/8"	0.7
SP2010500	1	Heavy duty; plated	3/4"	1-5/8"	7/8"	2-1/8"	0.7
SP2020500	1	Extra heavy duty; black oxide	3/4"	1-3/8"	7/8"	2-3/8"	0.9
SP2030500	1 & 2	Standard duty; black oxide	3/4" &	1-1/2" &	7/8"	2-3/8"	0.6
SP2030600	1 & 2	Standard duty; plated	3/4" &	1-1/2" &	7/8"	2-3/8"	0.6
SP2010100	2	Standard duty; black oxide	1"	1-3/4"	7/8"	2-3/8"	0.8
SP2010400	2	Standard duty; plated	1"	1-3/4"	7/8"	2-3/8"	0.8
SP2020700	2	Standard duty; black oxide	1"	1-1/4"	7/8"	2-3/8"	0.8
SP2020800	2	Standard duty; plated	1"	1-1/4"	7/8"	2-3/8"	0.8
SP2021900	2	Heavy duty; black oxide	1"	1-3/4"	1-3/16"	2-3/4"	1.8
SP2022000	2	Heavy duty; plated	1"	1-3/4"	1-3/16"	2-3/4"	1.8
SP2022900	3	Standard duty; black oxide	1-1/4"	1-3/4"	1-9/32"	3-1/8"	1.8
SP2023000	3	Standard duty; plated	1-1/4"	1-3/4"	1-9/32"	3-1/8"	1.8

Lift Arm Ball Sockets

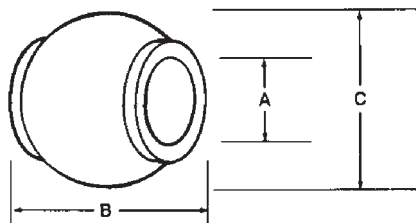
Weld-on lift arm ball sockets to fit Category 0 through Category 3 tractors. Available in black oxide and yellow zinc dichromate plated versions.



Part Number	Cat.	Description	A Pin Hole Size	B Length Thru Bore	C Sleeve Width	D Sleeve O.D.	Bulk Weight (Lbs.)
SP2022500	0	Standard duty; black oxide	5/8"	1"	3/4"	2"	0.6
SP2022600	0	Standard duty; plated	5/8"	1"	3/4"	2"	0.6
SP2020100	1	Standard duty; black oxide	7/8"	1-3/8"	7/8"	2-3/8"	0.9
SP2020300	1	Standard duty; plated	7/8"	1-3/8"	7/8"	2-3/8"	0.9
SP2030100	1 & 2	Heavy duty; black oxide	7/8" & 1-1/8"	1-3/4" both	1-3/16"	2-3/4"	1.4
SP2030200	1 & 2	Heavy duty; plated	7/8" & 1-1/8"	1-3/4" both	1-3/16"	2-3/4"	1.4
SP2030300	1 & 2	Extra heavy duty; black	7/8" & 1-1/8"	1-3/4" both	1-3/8"	3-1/8"	1.7
SP2020200	2	Standard duty; black oxide	1-1/8"	1-5/16"	15/16"	2-3/8"	0.8
SP2020400	2	Standard duty; plated	1-1/8"	1-5/16"	15/16"	2-3/8"	0.8
SP2021100	2	Heavy duty; black oxide	1-1/8"	1-3/4"	1-1/4"	2-3/4"	1.6
SP2021500	2	Extra heavy duty; black	1-1/8"	1-3/4"	1-3/8"	3-1/8"	1.9
SP2021600	2	Extra heavy duty; plated	1-1/8"	1-3/4"	1-3/8"	3-1/8"	1.9
SP2023100	3	Standard duty; black oxide	1-7/16"	1-3/4"	1-11/32"	3-1/2"	2.4
SP2023200	3	Standard duty; plated	1-7/16"	1-3/4"	1-11/32"	3-1/2"	2.4

Replacement Balls

Top link and lift arm balls for AGCO and other tractors. Designed to replace original balls.
Yellow zinc dichromate plating.



Part Number	Cat.	Description	A Pin Hole Size	B Length Thru Bore	C Ball Diam.	Bulk Weight (Lbs.)	Farmpak Number	Pkg. Type	Pcs/ Pkg.
FX03054	1	Oliver & John Deere top link ball; replaces Deere F2680, Oliver 105968A	3/4"	1-3/4"	2"	0.9	FX02270 FX33054	B C	1 1
FX03055	2	Oliver & John Deere top link ball; replaces Deere F2681, Oliver 104585A	1"	1-3/4"	2"	0.8	FX02271 FX33055	B C	1 1
FX00056	1	Ford lift arm ball; replaces Ford DDN995233; fits Ford 3000, 4000, 5000	7/8"	1-3/8"	2-1/4"	1.1	FX02277 FX02273 FX30056	B B C	2 1 1
FX00057	2	Ford lift arm ball; replaces Ford C5NN557A; fits Ford 3000, 4000, 5000	1-1/8"	1-3/4"	2-1/4"	1.1	FX02274 FX02278 FX30057	B B C	2 1 1
FX03056	2	Oliver lift arm ball; replaces Oliver 104591A; fits all models with claw type lift arm	1-1/8"	1-3/4"	2"	0.8	FX02272 FX02279 FX33056	B B C	2 1 1
FX03057	2	Ford lift arm ball; narrow width; replaces C5NN557B	1-1/8"	1-3/8"	2-1/4"	0.9	FX02275 FX02282 FX33057	B B C	2 1 1

Forged Weld-On Ball Ends

High-quality weld-on top link and lift arm ball sockets in Category 1, 2, and 3 sizes. Lift arm ends are available in straight and bent styles.



Top Link End

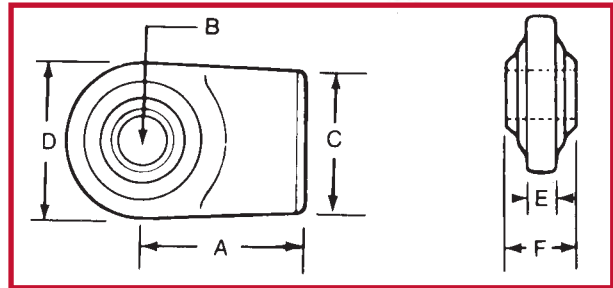
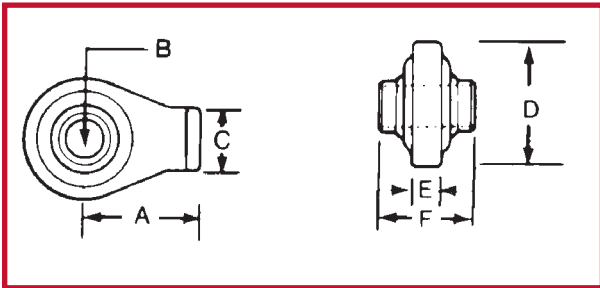


Straight



Bent

Lift Arm



Part Number	Cat.	Description	A	B	C	D	E	F	Bulk Weight (Lbs.)	Farmpak Number	Pkg. Type	Pcs/Pkg.
FX00310	1	Top link end	2"	3/4"	1-1/8"	2-1/4"	1/2"	1-3/4"	0.9	FX30310	C	1
FX00311	2	Top link end	2-3/8"	1"	1-1/8"	2-5/8"	1/2"	2"	1.4	FX30311	C	1
FX01338	1	Lift arm end-straight	2-3/4"	7/8"	2-3/8"	2-5/8"	5/8"	1-3/8"	1.7	FX31338	C	1
FX01342	2	Lift arm end-straight	3-1/8"	1-1/8"	2-3/4"	3-1/8"	3/4"	1-3/4"	2.8	FX31342	C	1
FX01351	1	Lift arm end-bent	4"	7/8"	1-7/8"	2-5/8"	5/8"	1-3/8"	2.0			
FX01352	2	Lift arm end-bent	4"	1-1/8"	1-7/8"	3-1/8"	5/8"	1-3/4"	2.7			
FX01344	3	Lift arm end-straight	3-3/8"	1-7/16"	3"	3-1/2"	3/4"	1-3/4"	3.0			

Top Link & Lift Arm Bushings

Used in the pin hole of a top link or lift arm to allow a smaller category pin to fit. Yellow zinc dichromate plating. See page 47 for countertop displays and assortments.



Part Number	Cat.	Description	Outside Diam.	Inside Diam.	Length	Bulk Weight (Lbs.)	Farmpak Number	Pkg. Type	Pcs/Pkg.
SP8020900	0-1	Fits all cat. 0 top link pins	3/4"	5/8"	1-5/8"	0.1	SP80209ZA	B	1
FX00353	1-2	Fits all cat. 1 top link pins; replaces Ford C7NN6993A	1"	3/4"		0.2	FX02250 FX32250	B C	1 2
FX03530	1-2	Fits all cat. 1 top link pins; short	1"	3/4"	1-5/8"	0.2	SP80220ZA	B	1
FX03008	2-3	Fits all cat. 2 top link pins	1-1/4"	1"		0.2	FX02251 FX33008	B C	1 2
SP8020800	0-1	Fits all cat. 0 lift arm pins	7/8"	5/8"	1-3/8"	0.1	SP80208ZB	B	2
FX00351	1-2	Fits all cat 1 lift arm pins; Ford C7NN6992A	1-1/8"	7/8"	1-3/4"	0.2	FX02252 FX32252	B C	2 2
FX03510	1-2	Fits all cat. 1 lift arm pins; replaces John Deere F2684	1-1/8"	7/8"	1-3/8"	0.2	SP80221ZB	B	2
FX03009	2-3	Fits all cat. 2 lift arm pins	1-7/16"	1-1/8"	1-3/4"	0.3	FX02253 FX33009	B C	2 2
FX03013	2-3	Fits all cat. 2 lift arm pins; extra long	1-7/16"	1-1/8"	3-1/4"	0.5	SP80320ZB	B	2
FX03010	2-3	Fits all cat. 2 lift arm pins; 15/32" lynch pin hole	1-7/16"	1-1/8"	2-1/2"	0.4	FX02254 FX33010	B C	2 2
FX03012	2-3	Fits all cat. 2 lift arm pins	1-7/16"	1-1/8"	2-3/4"	0.5	FX02255 FX32255	B C	2 2

Quick Hitch Adaptor Bushings

FX03016	1	Adapter bushing for cat. 1 Quick Hitch	-	7/8"	4"	1.5	FX33016	C	2
FX03015	2	Adapter bushing for cat. 2 Quick Hitch	-	1-1/8"	4"	1.0	FX33014	C	2



Swinging Drawbar

Swinging drawbars are designed to allow a limited amount of lateral movement when mounted on a tractor and are useful in cases where turning a towed implement may be a problem.



Part Number	Description	Weight (Lbs.)
FX10412	Swinging drawbar; 30" overall length; 3/4" first hitch pin hole; 5/8" second hitch pin hole	16.0
SP7040200	Swinging drawbar clevis pin; 7/8" diameter; 3-1/2" overall length	0.5

Lift Arm & Lift Arm Leveling Assembly

Category 1 lift arms and lift arm leveling assembly. Also see the Forged and Weld-on Ball Ends section on page 6.



Lift Arm



Leveling Assembly

Part Number	Description	Weight (Lbs.)
FX00500	Category 1 right or left hand forged lift arm; fits all Ferguson models, Ford 2N, 8N, 9N, NAA, Massey Ferguson 35, 50, Oliver 550 and Oliver 3-point conversion, John Deere 1010; 7/8" pin holes ; 31-3/4" ball centers; 34-1/2" overall length; black powder coat finish	11.7
FX00152	Category 1 lift arm leveling assembly; 18-1/2" closed; 25" open length; 7/8" NF thread diameter; replaces Ford NCA577A; black powder coat finish	6.0

Stabilizer Arms & Brackets

Replacement stabilizer arms for stabilizer kits and a variety of tractors. Stabilizer arms increase the stability of the tractor lift arms. Stay straps for Category 1 tractors are used to maintain an implement at a set height.



Part Number	Description	Weight (Lbs.)
FX00174	Upper stay strap for category 1; fits all Ferguson models, Massey Ferguson 35 and 50, Ford 2N, 8N, 9N, NAA, 600, 700, 800, 900, Oliver 550 and all Oliver 3-point conversions; black powder coat finish	2.8
FX00173	Lower stay strap for category 1; fits all Ferguson models, Massey Ferguson 35 and 50, Ford 2N, 8N, 9N, NAA, 600, 700, 800, 900, Oliver 550 and all Oliver 3-point conversions; black powder coat finish	2.4
SP5020100	Stay chain assembly; fits category 1 pins; fastens to top link pin on tractor and to lift arm pin on equipment; requires two per tractor; yellow zinc plated	3.2
FX00176	Right or left universal stabilizer arm; 7/8" pin holes on 31-9/16" centers; black powder coat finish	6.0
FX00177	Right or left universal stabilizer arm; replaces Massey Ferguson ST96362358; 7/8" pin holes on 33-1/8" centers; black powder coat finish	6.4
FX00159	Heavy duty adjustable forged stabilizer arm; fits all Ferguson models, Ford 2N, 8N, 9N, NAA, 600, Massey Ferguson 35, 50, 175, 65, 135, 150, 165, 180; adjustable from 28-1/2" to 36"; 7/8" pin holes; 7/8" NF threads; yellow zinc plated	6.0
SP6020600	Right or left stabilizer arm; fits Massey Ferguson with short lift arms; 7/8" pin holes on 30" centers; painted red	6.6
SP6020700	Right or left stabilizer arm; fits Massey Ferguson 65, 165, 175 and 180 standard clearance; 7/8" pin holes on 34" centers; painted red	7.5
SP6025100	Left stabilizer arm; fits Ford 2000 and 3000; 7/8" pin holes on 31-5/8" centers; painted blue	6.0
SP6025200	Right stabilizer arm; fits Ford 2000 and 3000; 7/8" pin holes on 31-5/8" centers; painted blue	6.0
FX00178	Universal stabilizer arm; 7/8" pin holes on 31-9/16" and 33-1/8" centers; black powder coat finish	6.1
FX00160	Right or left universal stabilizer bracket; fits Ferguson and Ford stabilizer kits; accomodates FX03169 stabilizer stub pin; black powder coat finish	3.0
FX00611	Stabilizer kit for category 1 implements with 7/8" draw pins; replaces Ferguson 677022; fits all Ferguson models, Massey Ferguson 35 and 60 and Ford 2N, 8N, 9N, NAA, 600, 800. Kit contains 2-FX00176 arms, 2-FX00160 brackets, 2-FX03169 pins and 2-FX03548 lynch pins	20.0
SP604030	Pair of universal stabilizer chains for most category 1 applications; yellow zinc plated	14.0
SP604220	Single chain for SP604030 kit above; yellow zinc plated	7.0

Stabilizer Pins

Stabilizer stub pins for Ferguson, Ford and other stabilizer kits. Yellow zinc dichromate plated.

Part Number	Pin Diam.	Usable Length	Overall Length	Thread Diameter	Bulk Weight (Lbs.)	Farmpack Number	Pkg. Type	Pcs/ Pkg.
SP7010100	7/8"	1/2"	3-1/4"	7/8" NF	0.8			
FX03169	7/8"	3/8"	2-5/8"	5/8" NF	0.3	FX02260 FX32260	B C	2 2
FX00169	7/8"	1/2"	2-5/8"	5/8" NF	0.3			
SP7080800	7/8"	11/16"	3-1/8"	3/4" NF	0.4			
FX03107	7/8"	1-1/4"	3-1/8"	5/8" NF	0.4			



Clevis Draw Pins

For use with implements with yoke type mountings. All pins are yellow zinc dichromate plated.



Head Type



Roll Pin Type



FX03039 Cat. 2 and 3

Part Number	Cat.	Type	Pin Diam.	Usable Length	Overall Length	Weight (Lbs.)
SP7023400	1	Roll Pin	7/8"	4-1/2"	6"	0.9
SP7023500	2	Roll Pin	1-1/8"	3-5/16"	4-3/4"	1.2
FX03032	2	Roll Pin	1-1/8"	4-3/4"	6-1/2"	1.7
SP7023700	2	Roll Pin	1-1/8"	5-3/8"	7"	1.9
FX03132	2	Roll Pin	1-1/8"	7-3/8"	9"	2.4
SP7023900	2	Roll Pin	1-1/8"	9"	10-3/4"	2.9
FX03033	3	Head	1-7/16"	4-11/16"	6"	2.8
SP7071000	3	Roll Pin	1-7/16"	3-3/8"	5-3/8"	2.3
SP7023100	3	Roll Pin	1-7/16"	6-1/4"	8-1/2"	3.8
FX03039	2 & 3	Head	1-1/8" & 1-7/16"	3-5/8" & 4-1/4"	9-1/4"	3.4
FX03031	1	Head	7/8"	4-1/4"	5-1/4"	2.7
FX03134	1 & 2	Head	7/8" & 1-1/8"	3-1/2" & 4-1/2"	9-1/4"	2.8
FX03133	2	Head	1-1/8"	5"	6-1/8"	1.8

Lift Arm Pins

Forged and adjustable Category 0 through 3 draw pins for a variety of applications. All pins are yellow zinc dichromate plated. See page 46 for linkage pin counter top/ peg board display.

Part Number	Cat.	Description	Pin Diam.	Usable Length	Overall Length	Thread Diam.	Thread Length	Weight (Lbs.)
FX03137	0	Adjustable; universal	5/8"	Adj.	3-7/8"	5/8" NF	2"	0.4
SP7022800	0	Forged; universal	5/8"	1-7/16"	3-7/8"	5/8" NF	1-1/8"	0.4
SP7022100	0 & 1	To work cat. 0 implements on cat. 1 tractor; adjustable	7/8"	1-3/4"	4-1/2"	5/8" NF	2"	0.6
SP7022400	1 & 0	To work cat. 1 implements on cat. 0 tractor; adjustable	5/8"	2"	5"	7/8" NF	2-1/4"	0.6
FX00211	1	Adjustable; universal	7/8"	Adj.	5"	7/8" NF	2-5/8"	1.1
FX00200	1	Forged; universal	7/8"	1-3/4"	5-1/2"	7/8" NF	1-5/8"	1.1
FX03000	1	Adjustable; universal; extra long	7/8"	Adj.	6-1/4"	7/8" NF	3-1/2"	1.3
FX03004	1	Forged; extra long	7/8"	2-1/4"	6-1/2"	7/8" NF	2-1/4"	1.3
SP7024400	1	Forged; replaces Ford 221218	7/8"	2-3/4"	5-1/8"	5/8" NF	1-3/8"	0.9
SP7024700	1	Forged; replaces Ford 103283, MF662459M1, MF00955-7-7/8	7/8"	2"	5"	5/8" NF	1-1/2"	0.9
SP7024800	1	Forged; replaces Ford 131010, 195425M1, D0955-4-1/2	7/8"	1-3/4"	4-1/2"	5/8" NF	5/8"	0.8
FX03178	1 & 2	Forged; extra long to work cat. 1 implements on cat. 2 tractor	1-1/8"	2-1/4"	6-5/16"	7/8" NF	2-1/4"	1.5
FX03001	1 & 2	Adjustable; to work cat. 1 implements on cat. 2 tractor	1-1/8"	Adj.	5-1/4"	7/8" NF	2-7/16"	1.4
FX00202	1 & 2	Forged; to work cat. 1 implements on cat. 2 tractor	1-1/8"	1-13/16"	5-1/4"	7/8" NF	1-5/8"	1.5
FX00213	1 & 2	Forged; universal	1-1/8" & 7/8"	2-1/16" both	8"	1" NF	1-1/4"	1.9
FX03002	2	Adjustable; universal	1-1/8"	Adj.	6-1/8"	1-1/8" NF	3-3/8"	2.3
SP7020900	2	Adjustable; universal; extra long	1-1/8"	Adj.	7-1/2"	1-1/8" NF	4-1/2"	2.6
FX03006	2	Forged; universal	1-1/8"	1-3/4"	6-1/8"	1-1/8" NF	2-3/8"	2.3
FX03022	2 & 1	Forged; to work cat. 2 implements on cat. 1 tractor	7/8"	1-3/4"	5-3/4"	1-1/8" NF	2-3/8"	1.8
SP7021100	2 & 3	Adjustable; to work cat. 2 implements on cat. 3 tractor	1-7/16"	Adj.	6-1/2"	1-1/8" NF	3-3/8"	2.9
FX03005	2 & 3	Forged; to work cat. 2 implements on cat. 3 tractor	1-7/16"	1-7/8"	5-3/4"	1-1/8" NF	1-1/2"	3.0
FX03007	3	Forged; universal	1-7/16"	2"	5-7/8"	1-3/8" NF	1-1/2"	3.5



Adjustable



Forged Shoulder



Cat. 1 to 2



Cat. 1 & 2



Cat. 2 to 1

Top Link Pins

Sizes and styles for Category 0 through 3 tractors. Yellow zinc dichromate plated. See page 46 for linkage pin counter top/ peg board display. Type B features extra large head for worn or oversized holes.



Type A



Type B

Part Number	Cat.	Type	Description	Pin Diam.	Usable Length	Overall Length	Weight (Lbs.)
FX03173	0	A	Top link pin	5/8"	3"	4-7/16"	0.4
FX00073	1	A	Replaces Ford 9N-560, Ferguson 195647M1	3/4"	2-3/4"	4-1/2"	0.5
FX00074	1	A	Long top link pin; replaces Ferguson 195589M1, AC339942	3/4"	3-7/8"	5-1/2"	0.6
FX00077	1	A	Extra long top link pin; replaces Ford E381T9	3/4"	4-3/4"	6-3/8"	0.8
FX00076	2	A	Replaces Ford C5NN560A, MF185873M91, AC2090149/239888	1"	3-9/16"	5-1/4"	1.2
SP7071900	2	A	Replaces Ford E27N995272	1"	3"	4-3/4"	1.1
FX03011	2	A	Replaces Ford C5NN486A	1"	4-3/8"	6"	1.3
SP7072000	2	A	Replaces Ford E2016F9, AC345552	1"	5-3/8"	7-1/16"	1.5
FX03026	3	A	Top link pin	1-1/4"	4-5/8"	6-1/2"	2.1
FX17102	1	B	Top link pin	3/4"	5-1/2"	6-5/6"	1.0
FX17104	2	B	Top link pin	1"	5-3/4"	7-1/10"	1.6

Economy (Clevis) Hitch Pins Pins

An economy hitch pin (clevis pin) for numerous applications. Yellow zinc dichromate plating.
Note: 3/4" and 1" can be used as top link pins with extra large head for worn hole.

Part Number	Pin Diam.	Usable Length	Overall Length	Weight (Lbs.)
SP7100000	1/2"	5"	6-3/8"	0.4
FX17101	5/8"	5"	6-3/8"	0.6
FX17102	3/4"	5"	6-3/8"	0.8
FX17103	7/8"	5"	6-3/8"	1.0
FX17104	1"	5"	6-3/8"	1.4
FX17105	1-1/8"	5"	6-3/8"	1.7



Cold Forged Hitch Pins

Forged head hitch pin with swivel handle and zinc plated "R" clip pin or lynch pin and chain. More than 25% stronger than Grade 2. Yellow zinc dichromate plated. See page 46 for counter top / peg board display.

Part Number W/Clip	Part Number W/Chain	Pin Diam.	Usable Length	Overall Length	Weight (Lbs.)
FX15180		3/8"	3-1/2"	5"	0.3
SP71010C0		3/8"	4-1/4"	4-3/4"	0.2
SP71011C0		1/2"	4-1/4"	5-3/4"	0.4
SP71012C0	SP71012CL	1/2"	6-1/4"	7-3/4"	0.5
FX15190	FX22131	1/2"	3-1/2"	5"	0.4
FX15200	FX15201	5/8"	4-1/4"	5-3/4"	0.6
FX14880	FX14881	5/8"	6-1/4"	7-3/4"	0.8
FX15210	FX15211	3/4"	4-1/4"	5-3/4"	0.9
FX14890	FX14891	3/4"	6-1/4"	7-3/4"	1.1
FX01820		7/8"	4-1/4"	5-3/4"	1.2
FX17880	FX17881	7/8"	6-1/4"	7-3/4"	1.4
FX01821		1"	4-1/4"	5-3/4"	1.5
FX17890	FX17891	1"	6-1/4"	7-3/4"	1.9
FX17900	FX17901	1-1/8"	6-1/4"	7-3/4"	2.4
FX18000	FX18001	1-1/4"	6-1/4"	7-3/4"	2.9



Premium Hitch Pins

One-piece forged hitch pin made from high carbon steel. Heat treated to Grade 5 performance to meet or exceed OEM specs. Includes spring wire swivel handle and "R" clip pin. Zinc plated. See page 46 for counter top / peg board display.

Part Number	Pin Diam.	Usable Length	Weight (Lbs.)
FX01600	1/2"	4"	0.4
FX01601	5/8"	4"	0.6
FX01602	5/8"	6"	0.8
FX01603	3/4"	4-1/4"	0.9
FX01604	3/4"	6-1/4"	1.1
FX01605	7/8"	4-1/4"	1.2
FX01606	7/8"	6-1/2"	1.6
FX01607	1"	6-3/4"	2
FX01608	1-1/8"	7"	2.6
FX01609	1-1/4"	7"	3.1



Red Head Hitch Pins

Designed for today's demanding applications, grade 5 performance, forged hitch pins are made from high strength steel and heat treated. Pin has black powder coating with a red vinyl coated head and handle. Zinc plated "R"clip pin included. See page 46 for counter top/ peg board display.

Part Number	Pin Diam.	Usable Length	Overall Length	Weight (Lbs.)
FX01500	1/2"	3-5/8"	6-5/8"	0.7
FX01501	5/8"	4"	7"	0.9
FX01502	5/8"	5-3/4"	9"	1.1
FX01503	3/4"	4"	7"	1.1
FX01504	3/4"	6-1/2"	9-1/2"	1.5
SP7005410	7/8"	4-1/4"	7-1/4"	1.4
FX01506	7/8"	6-1/2"	9-1/2"	1.9
SP7005510	1"	4-3/4"	7-3/4"	1.9
FX01508	1"	7-1/2"	10"	2.6
FX01510	1-1/8"	8-1/2"	11-1/2"	3.3
FX01512	1-1/4"	8-1/2"	11-1/2"	4.1
FX01514	1-1/2"	8-1/2"	11-1/2"	5.0
FX01515	1-3/4"	8-1/2"	12"	7.0
FX01516	2"	8-1/2"	12"	8.5
SP7005530*	1"	12"	15"	3.3
SP7005730*	1-1/4"	12"	15"	5.0
SP7005830*	1-1/2"	12"	15"	7.6

* New Longer Usable Lengths



Double Lok™ Hitch Pins

Part Number	Pin Diam.	Usable Length	Weight (Lbs.)
SP7004210	5/8"	4-1/2"	2.0
SP7004310	3/4"	4-1/2"	2.3
SP7004320	3/4"	6"	2.6
SP7004410	7/8"	4-1/2"	2.6
SP7004420	7/8"	6"	2.9
SP7004520	1"	6"	3.3
SP7004620	1-1/8"	7"	4.1
SP7004720	1-1/4"	7"	4.6
SP7004920	1-1/2"	8"	5.7

These grade 5 performance hitch pins are designed with a quick release handle to allow easy removal with double lock mechanism ensuring the pin will remain in place. The pin and handle are powder coated with zinc plated locks. See page 46 for rack display.



Gray Head Hitch Pins

Our premium, heat treated, grade 8 performance hitch pins made from alloy steel is designed for the toughest applications. Pin has black powder coating with a gray vinyl coated head and handle. Zinc plated "R" clip pin included. See page 46 for counter top/ peg board display.

Part Number	Pin Diam.	Usable Length	Overall Length	Weight (Lbs.)
FX01700	1/2"	3-5/8"	6-5/8"	0.7
FX01701	5/8"	4"	7"	0.9
FX01702	5/8"	6"	9"	1.0
FX01703	3/4"	4"	7"	1.2
FX01704	3/4"	6-1/2"	9-1/2"	1.2
FX01705	7/8"	4-1/4"	7-1/4"	1.4
FX01706	7/8"	6-1/2"	9-1/2"	1.9
FX01707	1"	4-3/4"	7-3/4"	1.9
FX01708	1"	7"	10"	2.4
FX01710	1-1/8"	7"	10"	3.0
FX01712	1-1/4"	7"	10"	3.0
FX01714	1-1/2"	8-1/2"	11-1/2"	5.8



Fixed Handle Hitch Pins

Forged head hitch pin with fixed handle and zinc plated "R" clip pin. More than 25% stronger than Grade 2. Yellow zinc dichromate plated.

Part Number	Pin Diam.	Usable Length	Overall Length	Weight (Lbs.)
SP71011WC	1/2"	4-1/4"	5-1/4"	0.4
SP71021WC	5/8"	4-1/4"	5-1/4"	0.6
SP71022WC	5/8"	6-1/4"	7-1/4"	0.8
SP71031WC	3/4"	4-1/4"	5-1/2"	1.1
SP71032WC	3/4"	6-1/4"	7-1/4"	1.1
SP71041WC	7/8"	4-1/4"	5-1/4"	1.2
SP71042WC	7/8"	6-1/4"	7-1/4"	1.4
SP71052WC	1"	6-1/4"	7-1/4"	2.2
SP71062WC	1-1/8"	6-1/4"	7-1/4"	2.2



Drop Forged Hitch Pins

One piece, drop-forged, grade 5 performance hitch pins are made from high strength steel and heat treated. Zinc plated "R" clip pin included. Yellow zinc dichromate plated.

Part Number	Pin Diam.	Usable Length	Overall Length	Handle	Weight (Lbs.)
SP7002040	7/16"	3-1/2"	5-11/32"	Wire	0.3
SP7002110	1/2"	3-1/2"	5-11/32"	Wire	0.4
SP7003210	5/8"	3-3/4"	6-15/16"	Solid	0.6
SP7003220	5/8"	6"	9-3/16"	Solid	0.8
SP7003310	3/4"	4"	7-7/16"	Solid	0.9
SP7003320	3/4"	6-1/4"	9-7/16"	Solid	1.2
SP7003410	7/8"	4-1/4"	7-3/4"	Solid	1.2
SP7003420	7/8"	6-1/2"	10-11/16"	Solid	1.7
SP7003510	1"	4-3/4"	8-17/32"	Solid	1.6
SP7003520	1"	6-3/4"	10-17/32"	Solid	2.2
SP7003620	1-1/8"	7"	11"	Solid	2.8
SP7003720	1-1/4"	7"	11-1/8"	Solid	3.6
SP7003820	1-3/8"	7"	11-27/32"	Solid	4.6
SP7003920	1-1/2"	8"	12-23/32"	Solid	6.6



Handle-Lok Hitch Pins

Spring steel wire on the pin to secure it. Made from high carbon steel. Yellow zinc dichromate plated.

Part Number	Pin Diam.	Usable Length	Overall Length	Weight (Lbs.)
FX15195	1/2"	4"	5-1/2"	0.5
FX15205	5/8"	4"	5-1/2"	0.7
FX15215	3/4"	4"	5-1/2"	1.0
FX14895	3/4"	6"	7-1/2"	1.2
FX17885	7/8"	6"	7-1/2"	1.5
FX17895	1"	6"	7-1/2"	1.9



Handle-Lok Hitch Pins (small)

Spring steel wire fits in the groove on the pin to secure it. Made from high carbon steel. Zinc plated.

Part Number	Pin Diam.	Usable Length	Overall Length	Weight (Lbs.)
FX15142	1/4"	1-3/4"	2-1/2"	0.6
FX15143	1/4"	2-1/8"	2-3/4"	0.6
FX15162	5/16"	2-1/4"	3-1/2"	1.0
FX15163	5/16"	2-1/2"	3-1/2"	1.2
FX15182	3/8"	1-1/2"	2-1/2"	1.5
FX15183	3/8"	2-3/8"	3-1/4"	1.9
FX15124	1/2"	3-1/2"	5-1/4"	0.5



Bent Hitch Pins

These pins have numerous farm, lawn and garden, and industrial applications. Complete with zinc plated "R" Clip pin. Yellow zinc dichromate plated.

Part Number	Pin Diam.	Usable Length	Weight (Lbs.)
SP7111400	5/16"	2-1/2"	0.10
SP7111500	5/16"	3"	0.12
SP7111700	3/8"	2-1/2"	0.14
SP7111800	3/8"	3"	0.18
SP7112000	1/2"	2-1/2"	0.30
FX01410	1/2"	3"	0.34
SP7112200	1/2"	4"	0.40
SP7112300	1/2"	5"	0.46
FX01411	5/8"	3"	0.50
SP7112600	5/8"	4"	0.64
SP7112700	5/8"	5"	0.76
FX01412	3/4"	3-1/2"	0.80
SP7112900	3/4"	4-1/2"	1.02
SP7113000	3/4"	5"	1.06



"R" Clip Pins

Available in the most popular sizes for farm and other applications. Yellow zinc dichromate plated spring wire. See page 47 for counter top displays and assortments.

Part Number	Wire Diam.	Overall Length	Fits Pin Diam.	Bulk Weight (Lbs.)	Farpak Number	Pkg. Type	Pcs/Pkg.
SP7092200	1/16"	1-9/16"	3/8" to 1/2"	0.01	SP70922ZJ SP70922YI	B C	10 9
FX00007	3/32"	2-5/16"	1/4" to 5/8"	0.01			
FX00008	5/64"	1-3/4"	5/16" to 1/2"	0.01	FX03108 FX33108	B C	12 9
FX00009	3/32"	1-5/8"	1/4" to 1/2"	0.01	FX03109 FX33109	B C	12 9
FX00010	1/8"	1-15/16"	1/2" to 3/4"	0.02	FX03110 FX33110	B C	8 6
FX00012	5/32"	2-15/16"	5/8" to 1"	0.04	FX03112 FX33112	B C	7
FX00013	3/16"	3-3/4"	7/8" to 1-1/4"	0.08	FX03113 FX33113	B C	3 2
FX00014	1/4"	4"	3/4" to 1"	0.10	FX03114 FX33114	B C	2 2
SP7092900	5/16"	5-15/16"	1" to 1-7/16"	0.30			
FX00015	5/16"	4-1/8"	1" to 1-7/16"	0.20	FX03115 FX33115	B C	2 1
					FX03116 FX33116	B C	14 14
Contains: FX00009 x 3, FX00010 x 4, FX00012 x 4, FX00013 x 3							



Twist Clip Pins

Easy to attach and holds more securely than the commonly used "R" clip pin.

Part Number	Wire Diam.	Overall Length	Fits Pin Diam.	Bulk Weight (Lbs.)	Farpak Number	Pkg. Type	Pcs/Pkg.
SP7099500	1/8"	2-1/2"	1/2" to 7/8"	0.02	SP70995YF	C	6
SP7099600	5/32"	3-1/32"	5/8" to 1"	0.04	SP70996ZB SP70996YE	B C	2 5
SP7099700	3/16"	4-3/32"	3/4" to 1-1/4"	0.06	SP70997YB	C	2



Universal Clevis Pins

Can be used as an adjustable replacement pin. Multiple holes allow user to cut off excess length. Yellow zinc dichromate plated. See page 47 for counter top display.

Part Number	Pin Diam.	Overall Length	Weight (Lbs.)	Farmpak Number	Pkg. Type	Pcs/Pkg.
FX01100	1/4"	2"	0.02	FX02310	B	4
				FX32310	C	4
FX01101	5/16"	2"	0.04	FX02311	B	4
				FX32311	C	3
FX01102	3/8"	2"	0.05	FX02312	B	2
				FX32312	C	2
FX01103	7/16"	2"	0.08	FX02313	B	2
				FX32313	C	2
FX01104	1/2"	2"	0.11	FX02314	B	2
				FX32314	C	3
FX01105	7/16"	2-1/2"	0.13	SP70417ZB	B	2
				FX32315	C	3
FX01106	1/2"	2-1/2"	0.14	FX02316	B	2
				FX32316	C	2
FX01107	7/16"	3"	0.14	SP70418ZB	B	2
				FX32317	C	2
FX01108	1/2"	3"	0.15	SP70419ZB	B	2
				FX32318	C	2
FX01109	5/8"	3"	0.16	SP70420ZB	B	2
				FX32319	C	2
FX01110	3/4"	3"	0.16	SP70421ZB	B	2
				FX32320	C	1



Lynch Pins

Fasteners for numerous farm and other applications. Yellow zinc dichromate plated except for FX03027 which has a black powder coated finish. See page 48 for counter top displays.

Part Number	Description	Pin Diam.	Usable Length	Shank Length	Overall Length	Bulk Weight (Lbs.)	Farmpak Number	Pkg. Type	Pcs/Pkg.
FX03548	Standard	3/16"	1"	1-3/8"	1-5/8"	0.03	FX02204 FX32204	B C	2 4
FX02646	P7919 with chain and cotter pin	3/16"	1"	1-3/8"	1-5/8"	0.03	SP70920ZB	B	2
FX02702	Standard	7/16"	1-1/4"	1-3/4"	2"	0.10	FX02200 SP70901ZJ FX32206	B B C	2 10 4
FX02650	P791 with chain and cotter pin	7/16"	1-1/4"	1-3/4"	2"	0.20	FX02203 FX32203	B C	2 2
FX02704	Standard	1/4"	1-1/4"	1-3/4"	2-1/8"	0.07	FX02201 FX32207	B C	2 4
FX02648	FX02704 with chain	1/4"	1-1/2"	1-11/16"	2-1/8"	.12			
FX03027	Heavy duty; fits cat. 1, 2 and 3 pins	7/16"	1-1/2"	1-3/4"	2-1/8"	0.13	FX02202 FX33027 FX32202	B C C	2 2 4
FX02709	Standard	5/16"	1-1/4"	1-3/4"	2-1/8"	0.10	FX02205 FX32205	B C	2 4
FX02647	FX02709 with chain	5/16"	1-1/2"	1-3/4"	2-1/8"	.60			
SP7091600	Standard	3/8"	1-1/4"	1-3/4"	2-1/8"	0.10	SP70916ZB	B	2
FX02698	Long shank	7/16"	1-1/4"	2"	2-5/16"	0.12	FX02215 FX32215	B C	2 4



FX03027



FX02650



FX02702

Locking Pins

Numerous farm, lawn and garden, and industrial applications. Round and square loop styles. Yellow zinc dichromate plated. See page 47 for countertop display and assortment.

Part Number	Diam.	Usable Length	Wire Loop	Bulk Weight (Lbs.)	Farmpak Number	Pkg. Type	Pcs/Pkg.
SP7095000	1/4"	1-3/8"	ROUND	0.06	SP70950ZB	B	2
SP7093800	1/4"	1-3/4"	ROUND	0.06	SP70938ZB SP70938YB	B C	2 2
SP7095200	1/4"	2-1/4"	SQUARE	0.08	SP70952ZB	B	2
SP7095300	1/4"	2-1/2"	SQUARE	0.08	SP70953ZB	B	2
FX00264	1/4"	2-1/2"	ROUND	0.08	SP70951ZB FX32264	B C	2 2
SP7094800	5/16"	1-1/4"	ROUND	0.06	SP70948ZB	B	2
SP7095400	5/16"	1-3/8"	ROUND	0.08	SP70954ZB	B	2
SP7094700	5/16"	1-11/16"	ROUND	0.08	SP70947ZB	B	2
SP7095500	5/16"	1-3/4"	ROUND	0.08	SP70955ZB	B	2
FX00276	5/16"	2-1/4"	SQUARE	0.10	FX02276 FX32276 SP70939YD	B C C	2 2 4
FX00266	5/16"	2-1/4"	ROUND	0.10	FX02266 FX32266 FX32269	B C C	2 2 4
SP7095600	5/16"	2-1/2"	ROUND	0.10	SP70956ZB	B	2
SP7095700	5/16"	2-1/2"	SQUARE	0.10	SP70957ZB	B	2
SP7095800	5/16"	3-1/2"	SQUARE	0.14	SP70958ZB	B	2
SP7095900	5/16"	3-15/16"	SQUARE	0.14	SP70959ZB	B	2
SP7096000	3/8"	1-1/2"	ROUND	0.11	SP70960ZB	B	2
SP7096100	3/8"	1-3/4"	ROUND	0.12	SP70961ZB	B	2
FX00265	3/8"	2-1/4"	ROUND	0.14	SP70941ZB FX32265	B C	2 2
FX00275	3/8"	2-1/4"	SQUARE	0.14	SP70964ZB FX32275	B C	2 2
SP7096300	3/8"	2-1/2"	ROUND	0.14	SP70963ZB	B	2
SP7096500	3/8"	2-1/2"	SQUARE	0.16			
SP7096600	3/8"	3"	SQUARE	0.16	SP70966ZB	B	2
SP7096700	3/8"	3-7/16"	SQUARE	0.18	SP70967ZB	B	2



Detent Pins

Ball detent allows for fast and easy insertion and removal of pin. Replaces pins that require a cotter pin. Available in most popular sizes. Zinc plated carbon steel.

3/16" Diameter

Part Number	Usable Length	Overall Length	Weight (Oz.)
SP7120200	1"	1-3/8"	0.2
SP7120400	1-1/2"	1-7/8"	0.3
SP7120600	2"	2-3/8"	0.4
SP7120800	3"	3-3/8"	0.5

5/16" Diameter

Part Number	Usable Length	Overall Length	Weight (Oz.)
SP7122700	1"	1-17/32"	0.6
SP7122900	1-1/2"	2-1/32"	0.8
SP7123100	2"	2-17/32"	1.0
SP7123300	2-1/2"	3-1/32"	1.2
SP7123400	3"	3-17/32"	1.3
SP7123600	3-1/2"	4-1/32"	1.4
SP7123700	4"	4-17/32"	1.6
SP7123900	5"	5-17/32"	2.0

7/16" Diameter

Part Number	Usable Length	Overall Length	Weight (Oz.)
SP7126500	2"	2-23/32"	1.9
SP7126700	2-1/2"	3-7/32"	2.2
SP7126900	3"	3-23/32"	2.6
SP7127100	4"	4-23/32"	3.3
SP7127300	5"	5-23/32"	4.0

1/4" Diameter

Part Number	Usable Length	Overall Length	Weight (Oz.)
SP7121200	1"	1-7/16"	0.4
SP7121400	1-1/2"	1-15/16"	0.6
SP7121600	2"	2-7/16"	0.6
SP7121800	2-1/2"	2-15/16"	0.7
SP7122000	3"	3-7/16"	0.9
SP7122200	4"	4-7/16"	1.6
SP7122400	5"	5-7/16"	1.3

3/8" Diameter

Part Number	Usable Length	Overall Length	Weight (Oz.)
SP7124600	1"	1-5/8"	1.0
SP7124800	1-1/2"	2-1/8"	1.1
SP7125000	2"	2-5/8"	1.4
SP7125200	2-1/2"	3-1/8"	1.7
SP7125300	3"	3-5/8"	1.9
SP7125500	3-1/2"	4-1/8"	2.2
SP7125700	4"	4-5/8"	2.5

1/2" Diameter

Part Number	Usable Length	Overall Length	Weight (Oz.)
SP7128000	1"	1-25/32"	1.7
SP7128100	1-1/2"	2-9/32"	2.2
SP7128200	2"	2-25/32"	2.5
SP7128300	2-1/2"	3-9/32"	3.2
SP7128400	3"	3-25/32"	3.4
SP7128600	4"	4-25/32"	4.4



SP7128100



SP7128400

Hardware & Fasteners

Most popular fasteners and small hardware items for farm, home and ranch projects packaged in poly bags and clear plastic box kits for easier merchandising.

Spring Pins	
Part Number	Description
SP175010	Spring pin assortment; 3/32" to 3/8" diam.; Bag (45)
SP175011	Spring pin; 1/8" x 1-1/2"; Bag (6)
SP175012	Spring pin; 3/16" x 1-1/2"; Bag (4)
SP175013	Spring pin; 3/16" x 2"; Bag (4)
SP175014	Spring pin; 1/4" x 1-1/2"; Bag (3)
SP175015	Spring pin; 1/4" x 2"; Bag (1)
SP175016	Spring pin; 1/4" x 2-1/2"; Bag (1)
SP175017	Spring pin; 5/16" x 2-1/2"; Bag (1)
SP175018	Spring pin; 3/8" x 2-1/2"; Bag (1)
SP175104	Spring pin assortment kit; 170 pieces 3/16" x 1-1/2" (25); 1/4" x 1-1/2" (15); 1/4" x 1-1/4" (25); 3/16" x 1" (25); 1/8" x 1-1/2" (30); 1/8" x 1" (50)



Straight Cotter Pins	
Part Number	Description
SP175020	Straight cotter pin assortment; Bag (45)
SP175021	Straight cotter pin; 3/32" x 1"; Bag (30)
SP175022	Straight cotter pin; 1/8" x 1" : Bag (20)
SP175023	Straight cotter pin; 1/8" x 1-1/2"; Bag (15)
SP175024	Straight cotter pin; 5/32" x 1-1/2"; Bag (10)
SP175025	Straight cotter pin; 3/16" x 2"; Bag (6)
SP175026	Straight cotter pin; 1/4" x 2"; Bag (3)



Hardware & Fasteners

Sickle Bar Rivets

Part Number	Description
SP175190	Sickle bar rivet; 0.215 x 5/8"; Bag (5)
SP175191	Sickle bar rivet; 0.205 x 1/2"; Bag (5)
SP175192	Sickle bar rivet; 0.205 x 17/32"; Bag (5)
SP175193	Sickle bar rivet; 0.205 x 9/16"; Bag (5)
SP175194	Sickle bar rivet; 0.205 x 5/8" Bag (5)
SP175195	Sickle bar rivet; 0.205 x 15/16"; Bag (5)
SP175196	Sickle bar rivet; 0.205 x 5/8"; Bag (5)



Square Key Stock

Part Number	Description
SP175070	Square key stock assortment; 1/8" SQ. to 3/8" SQ x 1-1/2"; Bag (17)
SP175071	Square key stock; 1/8" SQ x 1-1/2"; Bag (8)
SP175072	Square key stock; 1/4" SQ x 1-1/2"; Bag (4)
SP175073	Square key stock; 5/16" SQ x 1-1/2"; Bag (2)
SP175074	Square key stock; 3/8" SQ x 1-1/2"; Bag (2)
SP175075	Sqaure key stock; 3/16" x 1-1/2"; Bag (6)



Quick Repair Bushings

Part Number	Description
SP175230	Quick repair bushing; 3/4"ID; 1-3/4"OD x 1/8"; Bag (1)
SP175231	Quick repair bushing; 7/8"ID; 1-7/8"OD x 1/8"; Bag (1)
SP175232	Quick repair bushing; 1:ID; 2"OD x 1/8"; Bag (1)
SP175233	QUick repair bushing; 1-1/8"ID; 2-1/8"OD x 1/8"; Bag (1)
SP175234	Quick repair bushing; 1-1/4" ID; 2-1/4"OD x 1/8"; Bag (1)
SP175235	Quick repair bushing; 1-3/8"ID; 2-3/8"OD x 1/8"; Bag (1)
SP175236	Quick repair bushing; 1-1/2" ID; 2-1/2"OD x 1/8"; Bag (1)
SP175237	Quick repair bushing; 1-3/4"ID; 2-3/4"OD x 1/8; Bag (1)
SP175238	Quick repair bushing; 2"ID; 3"OD x 1/8"; Bag (1)



Hardware & Fasteners

Machine Bushings	
Part Number	Description
SP175050	Machine bushing assortment; 3/4" to 1-1/2" x 14 GA; Bag (20)
SP175051	Machine bushing; 1/2" x 14 GA; Bag (12)
SP175052	Machine bushing; 5/8" x 14 GA; Bag (12)
SP175053	Machine bushing; 3/4" x 14 GA; Bag (7)
SP175054	Machine bushing; 7/8" x 14 GA; Bag (7)
SP175055	Machine bushing; 1" x 14 GA; Bag (6)
SP175056	Machine bushing; 1-1/8" x 14 GA; Bag (4)
SP175057	Machine bushing; 1-1/4" x 14 GA; Bag (4)
SP175058	Machine bushing; 1-3/8" x 14 GA; Bag (3)
SP175059	Machine bushing; 1-1/2" x 14 GA; Bag (3)
SP175060	Machine bushing; 1-3/4" x 14 GA; Bag 2)
SP175113	Machine bushing assortment kit; 92 pieces; 1/2" x 14 GA (10); 5/8" x 14 GA (20); 3/4" x 14 GA (20); 7/8" x 14 GA (10); GA 1" x 14 GA (10); 1-1/4" x 14 GA (8); 1-3/8" x 14 GA (5); 1-1/2" x 14 GA (5); 3/4" x 14 GA (4)



Machine Bushings-Wide	
Part Number	Description
SP175171	Machine Bushing wide; 3/4"ID; 18 GA; Bag (5)
SP175172	Machine bushing wide; 7/8"ID; 18 GA; Bag (5)
SP175173	Machine bushing wide; 1"ID; 18 GA; Bag (5)
SP175174	Machine bushing wide; 1-1/8"ID; 18 GA; Bag (5)
SP175175	Machine bushing wide; 1-1/4"ID; 18 GA; Bag (5)
SP175176	Machine bushing wide; 1-3/8"ID; 18 GA; Bag (5)
SP175177	Machine bushing wide; 5/*"ID; 14 G A; Bag (5)
SP175178	Machine bushing wide; 3/4"ID; 14 GA; Bag (5)
SP175179	Machine bushing wide; 7/8"ID; 14 GA; Bag (5)
SP175180	Machine bushing wide; 1"ID; 14 G A; Bag (5)
SP175181	Machine bushing wide; 1-1/8"ID; 14 GA; Bag (5)
SP175182	Machine bushing wide; 1-1/4"ID; 14 GA; Bag (5)
SP175183	Machine bushing wide; 1-1/2"ID; 14 GA; Bag (5)
SP175184	Machine bushing wide; 1-3/4"ID; 14 G A; Bag (5)
SP175185	Machine bushing wide; 2"ID; 14 G A; Bag (5)
SP175186	Machine bushing wide; 2-1/8"ID; 14 GA; Bag (5)



Hardware & Fasteners

O-Rings	
Part Number	Description
SP175130	O-ring; 5/32"ID; 9/32" OD; Bag (5)
SP175131	O-ring; 1/4"ID; 3/8"OD; Bag (5)
SP175132	O-ring; 5/16" ID; 7/16" OD; Bag (5)
SP175133	O-ring; 3/8"ID; 9/16"OD; Bag (5)
SP175134	O-ring; 3/8"ID; 9/16"OD; Bag (5)
SP175135	O-ring; 7/16"ID; 5/8"OD; Bag (5)
SP175136	O-ring; 7/16"ID; 5/8"OD; Bag (5)
SP175137	O-ring; 1/2"ID; 11/16"OD; Bag (5)
SP175138	O-ring; 1/2"ID; 11/16"OD; Bag (5)
SP175139	O-ring; 9/16"ID; 11/16"OD; Bag (5)
SP175140	O-ring; 9/16"ID; 3/4"OD; Bag (5)
SP175141	O-ring; 5/8"ID; 3/4"OD; Bag (5)
SP175142	O-ring; 11/16"ID; 7/8" OD; Bag (5)
SP175143	O-ring; 11/16"ID; 13/16"OD; Bag (5)
SP175144	O-ring; 3/4"ID; 7/8"OD; Bag (5)
SP175145	O-ring; 3/4"ID; 15/16"OD; Bag (5)
SP175146	O-ring;13/16"ID; 15/16"OD; Bag (5)
SP175147	O-ring; 13/16"ID; 1-1/16"OD; Bag (5)
SP175148	O-ring; 7/8"ID; 1"OD; Bag (5)
SP175149	O-ring; 7/8"ID; 1-1/8"OD; Bag (5)
SP175150	O-ring; 1"ID; 1-3/16"OD; Bag (5)
SP175151	O-ring; 1"ID; 1-1/4"OD; Bag (5)
SP175152	O-ring; 1"ID; 1-1/8"OD; Bag (5)
SP175153	O-ring; 1-1/4"ID; 1-1/2"OD; Bag (5)
SP175154	O-ring; 1-3/8"ID; 1-5/8"OD; Bag (5)
SP175155	O-ring; 1-1/2"ID; 1-3/4"OD; Bag (5)
SP175156	O-ring; 1-5/8"ID; 2"OD; Bag (5)



Hardware & Fasteners

Assortment Kits	
Part Number	Description
SP175090	E-ring clip assortment; 1/16" to 3/4"; Bag (90)
SP175093	Woodruff key assortment'; Bag (30); contains 3/16" x 3/4" (4); 3/16" x 7/8" (4); 1/2" x 1/8" (10); 5/8" x 1/8" (8); 1" x 1/4" (4)
SP175101	E-ring assortment kit; Kit box (125); contains 1/16" e-ring (35); 3/16" e-ring (15); 3/8" e-ring (10); 5/8" e-ring (5); 1/8" e-ring (30); 1/4" e-ring (15); 1/2" e-ring (10); 3/4" e-ring (5)
SP175106	Machinery key assortment kit; (70); contains 1/8" x 1/8" x 1-1/2" (20); 3/16" x 1/4" x 1-1/2" (12); 5/16" x 5/16" x 1-1/2" (8); 3/16" x 3/16" x 1-1/2" (12); 1/4" x 1/4" x 1-1/2" (10); 3/8" x 3/8" x 1-1/2" (8)
SP175108	Woodruff key assortment kit (72); contains #3 (18); #5 (12); #6 (12); #9 (12); A (10); #15 (8)
SP175109	Retaining ring assortment kit (55); contains 1/4" (10); 5/16" (10); 3/8" (1); 7/16" (7); 1/2" (7); 5/8" (5); 3/4" (3); 1" (3)
SP175112	Cotter Pin Assortment Kit (420); 1/16" x 1" (100); 3/32" x 1"; (100); 1/8" x 1" (100); 1/8" x 1-1/2" ((60); 5/32" x 1" (40); 5/32" x 1-1/2" (40); 3/16" x 2" (0)
SP175114	Clevis pin assortment kit (50); 1/4" x 1-1/4" (4); 1/4" x 1-1/2" (4); 1/4" x 1-5/8" (4); 1/4" x 1-3/4" (4); 1/4" x 1-7/8" (4); 1/4" x 2" (4); 1/4" x 2-1/4" (4); 1/4" x 2-1/2" (4); 5/16" x 1-5/8" (1); 5/16" x 1-3/4" (2); 5/16" x 1-7/8" (2); 5/16" x 2" (2); 5/16" x 2-1/4" (2); 5/16" x 2-1/2" (1); 5/16" x 2-7/8" (1); 5/16" x 3" (1); 3/8" x 1-7/8" (1); 3/8" x 2" (1); 3/8" x 2-1/4" (1)



Clevises

SpeeCo designed and engineered (totally forged) straight, twisted, utility and farm clevises with heat treated pins. Total forging provides better grain structure alignment without built-in stress and more consistency in strength, quality and conformity. Clevises, midlinks and drawbar hook have black powder coated finish. Clevis pins are yellow zinc dichromate plated.

Straight Clevises

Part Number	Body Diam.	Clevis Opening	Usable Length	Pin Diam.	Working Load Limit (Lbs.) *	Weight (Lbs.)
FX18158	5/8"	7/8"	3-1/4"	1/2"	6,000	1.5
FX18134	3/4"	1-5/16"	3-3/4"	5/8"	12,000	2.5
FX18178	7/8"	1-5/16"	3-1/4"	3/4"	16,000	3.0
FX18187	7/8"	1-5/16"	4-1/4"	3/4"	16,000	3.6
FX18190	15/16"	1-7/16"	4-5/8"	7/8"	20,000	4.3
FX18195	1"	2-1/8"	5-5/16"	1"	25,000	5.8



Twisted Clevises

Part Number	Body Diam.	Clevis Opening	Usable Length	Pin Diam.	Working Load Limit (Lbs.) *	Weight (Lbs.)
FX18258	5/8"	7/8"	3"	1/2"	6,000	1.5
FX18234	3/4"	1-5/16"	3-1/2"	5/8"	12,000	2.5
FX18278	7/8"	1-5/16"	3"	3/4"	16,000	3.0
FX18287	7/8"	1-5/16"	3-7/8"	3/4"	16,000	3.6
FX18290	15/16"	1-7/16"	4-1/4"	7/8"	20,000	4.3
FX18295	1"	2-1/8"	5"	1"	25,000	5.8



General Clevis

Part Number	Body Diam.	Clevis Opening	Usable Length	Pin Diam.	Working Load Limit (Lbs.) *	Weight (Lbs.)
FX18465	3/4"	2-1/2"	6-3/16"	3/4"	10,000	3.3



**DO NOT EXCEED WORKING LOAD LIMIT.
FARM HARDWARE IS NOT FOR LIFTING.*

Clevises

Screw pin shackle type used for multiple hitches and crawler tractors.



Farm Clevises									
Part Number	Body Diam.	Clevis Opening	Usable Length	Pin Diam.	Working Load Limit (Lbs.)*	Bulk Weight (Lbs.)	Farpak Number	Pkg. Type	Pcs/ Pkg.
FX18646	1/4"	15/32"	1-1/8"	5/16"	1,000	0.1	FX38646	C	2
FX18647	5/16"	17/32"	1-1/4"	3/8"	2,000	0.2	FX38647	C	2
FX18648	3/8"	23/32"	1-7/16"	7/16"	3,000	0.3	FX38648	C	1
FX18649	7/16"	3/4"	1-11/16"	1/2"	4,000	0.5	FX38649	C	1
FX18650	1/2"	13/16"	1-15/16"	5/8"	6,500	0.7	FX38650	C	1
FX18651	5/8"	1-1/16"	2-1/2"	3/4"	9,000	1.5	FX38651	C	1
FX18652	3/4"	1-1/4"	3"	7/8"	13,000	2.2	FX38652	C	1
FX18653	7/8"	1-7/16"	3-1/4"	1"	15,000	3.5			
FX18654	1"	1-11/16"	3-3/4"	1-1/8"	17,000	5.2			
SP4904100	1-1/8"	1-13/16"	4-1/4"	1-1/4"	24,000	7.0			
SP4904110	1-1/4"	2"	4-1/2"	1-3/8"	28,000	9.5			



Utility Clevises									
Part Number	Body Diam.	Clevis Opening	Usable Length	Pin Diam.	Working Load Limit (Lbs.)*	Bulk Weight (Lbs.)	Farpak Number	Pkg. Type	Pcs/ Pkg.
FX18546	1/4"	15/32"	7/8"	5/16"	1,000	0.1	FX38546	C	2
FX18547	5/16"	17/32"	1"	3/8"	1,500	0.2	FX38547	C	2
FX18548	3/8"	21/32"	1-1/4"	7/16"	2,000	0.3	FX38548	C	1
FX18549	7/16"	23/32"	1-1/2"	1/2"	3,000	0.4	FX38549	C	1
FX18550	1/2"	13/16"	1-11/16"	5/8"	6,000	0.6	FX38550	C	1
FX18551	5/8"	1-1/16"	2"	3/4"	9,000	1.2	FX38551	C	1



***DO NOT EXCEED WORKING LOAD LIMIT.
FARM HARDWARE IS NOT FOR LIFTING.**

Clevises

Mid-Links

Part Number	Chain Size	Working Load Limit (Lbs.)*	Weight (Lbs.)	Farpak Number	Pkg. Type	Pcs/Pkg.
FX18605	1/4" or 5/16"	4,700	0.3	FX38605	C	10
FX18606	3/8"	6,600	0.4	FX38606	C	10
FX18608	7/16" or 1/2"	11,300	1.0	FX38608	C	11
SP4905040	5/8"	18,000	1.7			



Tractor Drawbar Grab Hook

Part Number	Description	Working Load Limit (Lbs.) *	Weight (Lbs.)
FX18834	For all tractor drawbars up to 1-5/8" thick; for use with 5/16" to 1/2" chain	9,000	3.1
FX18835	Grab hook pin to fit FX18834; 3/4" diameter; 2-1/2" usable length	-	0.6



T-Handle Clevis Pins

Heat treated replacement pins for all SpeeCo straight and twisted clevises. Yellow zinc dichromate plated.

Part Number	Diam.	Usable Length	Weight (Lbs.)
FX18812	1/2"	2-1/4"	0.4
FX18813	5/8"	3-1/8"	0.5
FX18814	3/4"	3-1/4"	0.7
FX18815	7/8"	3-3/4"	1.2
FX18816	1"	4-1/4"	1.5



**DO NOT EXCEED WORKING LOAD LIMIT.
FARM HARDWARE IS NOT FOR LIFTING.*

Miscellaneous Accessories

Steering Wheel Spinners

Wheel spinners to fit most tractors and trucks. Includes shallow and deep mount spoke adapters. Black Bakelite, polished aluminum and vinyl colors available. See page 48

Part Number	Description	Bulk Weight (Lbs.)	Farmpak Number	Pkg. Type	Pcs/Pkg.
SP1608510	Black Bakelite Knob with Steel Base	0.5			
FX00952	Aluminum Knob with Chrome Plated Base	0.6	FX30952	C	1
FX00956	Blue Vinyl Coated Knob with Chrome Plated Base	0.7	FX30956	C	1
FX00953	Black Vinyl Coated Knob with Chrome Plated Base	0.7	FX30953	C	1
FX00957	Red Vinyl Coated Knob with Chrome Plated Base	0.7	FX30957	C	1
FX00954	Yellow Vinyl Coated Knob with Chrome Plated Base	0.7	FX30954	C	1
FX00955	Green Vinyl Coated Knob with Chrome Plated Base	0.7	FX30955	C	1
SP160426	Deluxe Wheel Spinner packaged in Clamshell	0.7			



Vinyl Wheel Spinner



Deluxe Wheel Spinner

Cylinder Stroke Control Segments

Designed to control the stroke on air or hydraulic cylinders. Unique "Finger Tab" design for easier installation and removal. Clamshell package.

Part Number	Description	Segments	Weight (Lbs.)
FX30098	Fits 1-3/8" & 1-1/2" diameter shafts; aluminum; no finger tabs	3/4", 1", 1-1/4", 1-1/2"	1.5
FX30099	Fits 1-1/8" & 1-1/4" diameter shafts; aluminum; no finger tabs	3/4", 1", 1-1/4", 1-1/2"	1.5
SP3910200	Fits 7/8" & 1-1/16" diameter shafts; aluminum	3/4", 1", 1-1/4", 1-1/2"	2.3
FX39899	Fits 1-1/8", 1-1/4", 1-3/8" & 1-1/2" diameter shafts; aluminum	3/4", 1", 1-1/4", 1-1/2"	2.0
FX09697	Fits 1-3/4", 1-7/8" & 2" diameter shafts; aluminum	1", 1-1/2", 2", 4"	4.4



Finger Tabs



Miscellaneous Accessories

Long Distance Cow Bells

Produces a SHARP TONE that can be heard at long distances. One piece steel construction. For livestock control or use at sporting events. Powder coated.

Part Number	Description	Height	Weight (Lbs.)
SP9007080	Long Distance 8LD	1-5/8"	0.2
SP9007090	Long Distance 9LD	1-15/16"	0.2
SP9007100	Long Distance 10LD	2-13/16"	0.4
SP9007110	Long Distance 11LD	2-15/16"	0.5
SP9007120	Long Distance 12LD	3-9/16"	0.9
SP9007140	Long Distance 14LD	4-5/16"	1.2



Kentucky Cow Bells

Produces a DULL TONE that can be heard from far distances. Steel welded construction. For livestock control and use at sporting events. Powder coated.

Part Number	Description	Height	Weight (Lbs.)
SP9007070	Kentucky 7K	1-5/8"	0.2
SP9007060	Kentucky 6K	2-5/8"	0.3
SP9007050	Kentucky 5K	3-1/8"	0.4
SP9007040	Kentucky 4K	3-3/4"	0.6
SP9007030	Kentucky 3K	4-1/4"	0.7
SP9007020	Kentucky 2K	4-7/8"	0.8
SP9007010	Kentucky 1K	6"	0.8
SP9007150	Kentucky 0K	6-1/2"	1.6
SP9007230	Sports Bell	4"	1.1



79021466D

Hay Hooks

Part Number	Description	Weight (Lbs.)
FX05070	Hay hook; 11" overall length; painted red	1.1
SP4701060	Hay hook; 17" overall length; painted red	1.5
SP4701070	Hay hook, 9" overall length, wood handle	0.5
SP4701080	Hay hook, leather handle	1.1



FX05070

SP4701070

SP4701080

Hydraulic Cylinder Pins

Pins for hydraulic cylinders and jacks in popular sizes. Standard cylinder clips included. Will accommodate "R" clip pin. Yellow zinc dichromate plated.

Part Number	Diam.	Usable Length	Overall Length	Weight (Lbs.)
SP7071200	1"	2"	2-3/4"	0.6
SP7073600	1"	2-1/8"	2-15/16"	0.5
FX01544	1"	2-3/4"	3-9/16"	0.8
SP7074300	1"	2-7/8"	3-11/16"	0.8
SP7074400	1"	3"	3-13/16"	0.9
SP7071300	1"	3-1/8"	3-15/16"	0.9
SP7073100	1-1/8"	1-15/16"	2-3/8"	0.8
FX01545	1"	3-1/4"	4-1/16"	0.9
SP7075000	1-1/4"	3-1/4"	4-1/16"	1.4
FX00017	Clip Only	--	--	.002
FX30017	0017 Clip	Package of 4		.008



Ratchet Jacks

Implement jacks have multiple uses including the adjustment of implements and equipment. Replace hydraulic cylinders or old screw jacks in those applications where infrequent adjustment is needed.

Part Number	Description	Color	Weight (Lbs.)
FX01542	Heavy duty ratchet jack with 1-1/4" ACME threads and grease zerks; adjustable from 20" closed to 28" open; 1" clevis pins, clip pins and handle included	Black	15
SP10541GT	Heavy duty ratchet jack with 1-1/4" ACME threads and grease zerks; adjustable from 20" closed to 28" open; 1" clevis pins, clip pins and handle included	Primer	15
SP1050300	Turnbuckle implement jack with 1-1/4" NC threads; adjustable from 20" closed to 28" open; 1" pin holes	Red	11.1
SP1054800	Handle for ratchet jacks	Plated	0.7



Ratchet Jack



Turnbuckle Implement Jack

Utility Jacks

Includes the most popular styles and sizes. The jacks have lift capacities from 2000 lbs. to 5000 lbs. Precision-engineered with smooth turning handle, dependable inner screw and rugged foot plate. Available in several topwind and sidewind styles, with lift heights of 10" & 15".

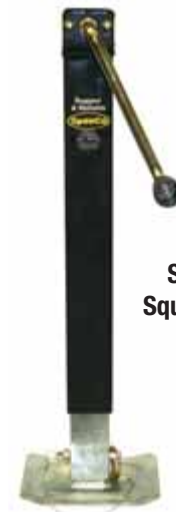
Part Number Bulk	Description	Lift Height	Lift Capacity (Lbs.)	Weight (Lbs.)
SP100101N	Flange (weld) mount, topwind	10"	5000	16.4
SP100102N	Tubular mount, topwind	10"	5000	15.3
SP100103N	Flange (weld) mount, topwind	15"	5000	20.9
SP100104N	Tubular mount, topwind	15"	5000	19.8
SP1001500	A-frame, topwind	15"	2000	12.9
SP1001060	Square jack direct weld, topwind	15"	5000	26.0
SP1001510	A-frame, topwind	15"	5000	13.7
SP100201N	Flange (weld) mount, sidewind	10"	5000	12.6
SP100202N	Tubular mount, sidewind	10"	5000	16.9
SP100203N	Flange mount, sidewind	15"	5000	20.4
SP100204N	Tubular mount, sidewind	15"	5000	19.8
SP1002250	Square jack, direct weld, sidewind	15"	5000	26
SP1003010	Flange (weld) mount, topwind	10"	2000	14.5
SP1003020	Tubular mount, topwind	10"	2000	14.1
SP1003030	Flange (weld) mount, topwind	15"	2000	18.8
SP1003040	Tubular mount, topwind	15"	2000	19.1
SP1004010	Flange (weld) mount, sidewind	10"	2000	16.9
SP1004020	Tubular mount, sidewind	10"	2000	14.0
SP1004150	Wheel jack; flange mount;	10"	1000	15.0
SP28033800	Utility jack display stand; for 4 flange mount and 4 tube mount jacks			55.0



**Topwind
A-Frame**



**Wheel
Jack**



**Sidewind
Square Jack**



**Sidewind
Flange (weld)
Mount**



**Topwind
Tubular
Mount**

Utility Jack Replacement Parts

Replacement parts for the handle assemblies and other common parts for the jacks. Packaged in clamshells.

Part Number	Description	Fits Tongue Jacks	Weight (Lbs.)
SP1011010	Sidewind Handle Assembly	Sidewind 2000 lbs. jacks	1.35
SP1011020	Sidewind Handle Assembly	Sidewind 5000 lbs. jacks	1.70
SP1011030	Topwind Handle Assembly	All 2000 lbs. and 5000 lbs. topwind jacks	1.00
SP1011040	Topwind Knob	All topwind jacks	0.15
SP1011050	Sidewind Knob	All sidewind jacks	0.15
SP1011060	Removeable Foot , base repair kit	All A-frame jacks	1.95
SP1011070	Wheel with nut and bolt	Replacement wheel for SP1011080	1.10
SP1011080	Complete caster assembly	All A-frame jacks	3.55
SP1011090	Flange mount L-bracket	All flange mount jacks to 5000 lbs.	1.30
SP1011100	Thrust bearing for 2000 lbs.	All 2000 lbs. jacks	0.15
SP1011110	Large bearing for 5000 lbs.	All 5000 lbs. jacks	0.30
SP1011120	Circlip retaining ring	All A-frame jacks	0.05
SP1011140	Weld-on tube mount 5/8"	Tube mount jacks with 5/8" tube mount	0.85
SP1011160	Detent Pin	Tube mount jacks with 5/8" tube mount hole	0.50
SP1011170	Plunger Pin for 2000 lbs.	2000 lbs. Flange mount tongue jacks	0.45
SP1011180	Plunger Pin for 5000 lbs.	5000 lbs. Flange mount tongue jacks	0.80
SP1011190	Sidewind gear kit for 2000 lbs.	For use with 2000 lbs. sidewind jacks	0.25
SP1011200	Sidewind gear kit for 5000 lbs.	For use for 5000 lbs. sidewind jacks	0.55
SP10112200	Complete caster assembly (clam)	Retrofittable to all jacks to 5000 lbs.	3.60



SP1011010



SP1011200

Miscellaneous Accessories

Raincaps (Exhaust Weather Caps)

Fits most tractors, equipment and engines. Opens with the slightest pressure and closes the instant exhaust stops. Easy one bolt installation. Gray powder coat finish.

Part Number	Minimum Exhaust O.D.	Maximum Exhaust O.D.	Weight (Lbs.)
FX11033	1-1/2"	1-11/16"	0.56
FX11034	1-3/4"	1-15/16"	0.58
FX11035	2"	2-3/16"	0.90
FX11036	2-1/4"	2-7/16"	0.92
FX11037	2-1/2"	2-11/16"	1.01
FX11038	2-3/4"	2-15/16"	1.04
FX11039	3"	3-3/16"	1.08
FX11040	3-1/4"	3-7/16"	1.20
FX11041	3-1/2"	3-11/16"	1.30
FX11043	4"	4-3/16"	1.60
SP1609120	4-1/4"	4-7/16"	1.62
SP1609130	4-1/2"	4-11/16"	1.68
FX11044	5"	5-3/16"	1.82



Tool Boxes

Easily mounts to tractors or other equipment. Hardware and brackets for universal mounting included. Packaged in an attractive four color display box.

Part Number	Description	Weight (Lbs.)
SP1613200	16" Portable/ mountable tool box; red	8.0
SP1613250	20" Portable/ mountable tool box; red	10.0
SP161320B	16" Portable/ mountable tool box; black	8.0
SP161325B	20" Portable/mountable tool box black	10.0



Miscellaneous Accessories

Part Number	Description	Bulk Weight (Lbs.)	Farm Pak Number	Pkg. Type	Pcs/Pkg.
SP1604010	Check chain clevis eye bolt; used to fasten check chain to lift arms; replaces Ford NCB660A; fits Ferguson 20 & 30; assembled with 9/16" NF hex nut	0.4	SP10641YB SP10641ZB	C B	2 2
FX00948	Check chain clevis; used to fasten check chain to tractor; replaces Ford 9N582; fits MF 20, 30, 35, 40 and 50	0.1	FX30948	C	2
FX01189	Muffler clamp assembly; replaces Ford 9N5251; fits Ford 2N, 8N, 9N, MF 20, 30, 40 and 50	0.6	FX31189 SP100901ZA	C B	1 1
FX00501	Drill drag chain; 3-1/2" ring diameter; 1/2" ring thickness; fits most standard seed drills	2.1			
FX32410	Cotter Pin Assortment 100 pieces of popular sizes	1.7			
SP10642A0	Category 1 double ball end; 7/8" pin hole; 4-7/16" centers	2.0			
SP1008050	Stake pocket; 1-1/2" x 3-1/4" opening x 2-1/2" high; black powder coat finish	1.0			
SP3908110	Hydraulic Reservoir; 5 gallon capacity; 18" long x 8-3/4" wide by 8-3/8" tall; A variety of uses including log splitters and various hydraulic equipment	17.7			



Harrow Teeth

Replacement harrow teeth for a variety of implement manufacturers. Heat treated point.

Part Number	Description	Width	Length	Weight (Lbs.)
SP5602310	Square, no head	5/8"	8"	0.85
SP5602320	Square with head	5/8"	10"	1.05
SP5602330	Square, no head	5/8"	10-1/4"	1.10
SP5602340	Square with head	5/8"	12"	1.25
SP5602360	Square with head	5/8"	14"	1.45
SP5602400	Square, no head	3/4"	8"	1.13
SP5602420	Square, no head	3/4"	9"	1.25
SP5602450	Square with head	3/4"	10"	1.45
SP5602470	Square with head	3/4"	11"	1.52
SP5602490	Square with head	3/4"	12"	1.80
SP5602480	Square, no head	3/4"	12"	1.75
SP5602510	Square with head	3/4"	14"	2.10
SP5602200	Full diamond with head	5/8" x 7/8"	8"	0.62
SP5602210	Full diamond, no head	5/8" x 7/8"	8"	0.58
SP5602170	Full diamond, 1/2" thread	5/8" x 7/8"	8"	0.60
SP5602160	Full diamond, 7/16" thread	5/8" x 7/8"	8"	0.60
SP5602190	Full diamond, 1/2" thread	5/8" x 7/8"	8-1/2"	0.60
SP5602180	Full diamond, 7/16" thread	5/8" x 7/8"	8-1/2"	0.60



Square, no head



Square with head



Full Diamond, no Head



Full Diamond with Head



Full Diamond with thread

Shaft Set Collars

Precision machined for exact fit. Size is stamped on each collar. Allen head set screw provided. Yellow zinc dichromate plated.

Part Number (Bulk)	Part Number* (Bagged)	Bore Size	Outside Diam.	Width	Set Screw Size	Bulk Weight (Oz.)
SP1608010	SP160801ZB (2)	1/4"	1/2"	9/32"	10-32 x 1/8"	0.3
SP1608020	SP160802ZB (2)	5/16"	5/8"	11/32"	10-32 x 1/8"	0.3
SP1608030	SP160803ZB (2)	3/8"	3/4"	3/8"	1/4-20 x 3/16"	0.6
SP1608040	SP160804ZB (2)	7/16"	7/8"	7/16"	1/4-20 x 1/4"	0.8
SP1608050	SP160805ZB (2)	1/2"	1"	1/2"	1/4-20 x 1/4"	1.3
SP1608060	SP160806ZB (2)	9/16"	1-1/8"	9/16"	1/4-20 x 1/4"	1.9
SP1608070	SP160807ZB (2)	5/8"	1-1/8"	9/16"	5/16-18 x 1/4"	1.9
SP1608080	SP160808ZB (2)	11/16"	1-3/8"	5/8"	5/16-18 x 1/4"	3.2
SP1608090	SP160809ZB (2)	3/4"	1-3/8"	5/8"	5/16-18 x 1/4"	2.9
SP1608110	SP160811ZB (2)	7/8"	1-1/2"	5/8"	5/16-18 x 5/16"	3.2
SP1608120	SP160812ZB (2)	15/16"	1-5/8"	5/8"	5/16-18 x 5/16"	3.8
SP1608130	SP160813ZB (2)	1"	1-5/8"	5/8"	5/16-18 x 5/16"	3.5
SP1608150	SP160815ZA (1)	1-1/8"	1-3/4"	5/8"	5/16-18 x 5/16"	3.8
SP1608160	SP160816ZA (1)	1-3/16"	2"	11/16"	3/8-16 x 3/8"	5.8
SP1608170	SP160817ZA (1)	1-1/4"	2"	11/16"	3/8-16 x 3/8"	5.7
SP1608190	SP160819ZA (1)	1-3/8"	2-1/8"	3/4"	3/8-16 x 3/8"	6.7
SP1608210	SP160821ZA (1)	1-1/2"	2-1/4"	3/4"	3/8-16 x 3/8"	7.4
SP1608230	SP160823ZA (1)	1-3/4"	2-3/4"	7/8"	1/2-13 x 1/2"	12.2
SP1608260	SP160826ZA (1)	2"	3"	7/8"	1/2-13 x 1/2"	14.4



Yoke Accessories

Part Number	Description	Bulk Weight (Lbs.)	Farmpak Number	Pkg. Type	Pcs/Pkg.
SP1606190*	Yoke pin assembly; fits most American PTO yokes	0.1	SP160619YA	C	1
SP1606250*	Yoke pin assembly for 1-3/8" x 6" spline or spline adapter; welded yoke only	0.1	SP160625YA	C	1
SP1606260*	Yoke pin assembly for 1-3/8" x 21" spline or spline adapter; welded yoke only	0.2	SP160626YA	C	1
FX01145	Roll pin; 5/16" pin diameter x 2-1/4" usable length	0.1	FX02283	B	5
			FX32283	C	5



SP1606260



FX01145

* ASAE approved

Gate Accessories

Gate Hinge Straps

For use with 3/8" carriage bolt

Part Number	Size	Hinge Hole Diam.	Weight (Lbs.)
SP1610600	6"	1/2"	0.6
SP1610610	8"	1/2"	0.7
SP1610620	10"	5/8"	1.1
SP1610630	12"	5/8"	1.2
SP1610640	14"	3/4"	2.0
SP1610650	16"	3/4"	2.3



Gate Hinge Clamps

Part Number	Size	Hinge Hole Diam.	Weight (Lbs.)
SP1610660	3/4" x 1-3/4"	3/4"	0.9
SP1610670	3/4" x 2"	3/4"	0.9
SP1610680	5/8" x 1-3/4"	5/8"	0.9
SP1610690	5/8" x 2"	5/8"	0.9



Gate Hinge Bolts

Part Number	Size	Strap Size	Weight (Lbs.)
SP1610700	1/2" x 6"	6" & 8"	0.6
SP1610710	5/8" x 8"	10" & 12"	1.1
SP1610720	5/8" x 12"	10" & 12"	1.4
SP1610730	3/4" x 10"	14" & 16"	1.7
SP1610740	3/4" x 12"	14" & 16"	1.9



Gate Screw Hooks

Part Number	Size	Strap Size	Weight (Lbs.)
SP1610750	1/2" x 4"	6" & 8"	0.3
SP1610760	5/8" x 5"	10" & 12"	0.6
SP1610770	3/4" x 6"	14" & 16"	0.8
With Eye Hinge			
SP1610780	1/2" x 4"	5" & 8"	0.5
SP1610790	5/8" x 5"	10" & 12"	0.9













Screw Hook (male)



Screw Hook (female)

Gate Accessories

Part Number	Description	Weight (Lbs.)	
SP1610030	Two-way gate latch; Round tube gates 1-5/8" to 2" O.D.; painted blue	5.0	
SP1610070	Two-way lockable gate latch; designed to accept padlock; Round tube gates 1-1/4" to 1-1/2" O.D.; painted black	5.0	
SP1610010	Two-way lockable gate latch; designed to accept padlock; Round tube gates 1-5/8" to 2" O.D.; painted blue	5.0	
SP1610050	One-way lockable gate latch; designed to accept padlock; Round tube gates 1-5/8" to 2" O.D.; painted red	3.2	
SP1610020	Gate anchor; holds livestock gate open in any position; helps prevent gate end from swinging and sagging; Round tube gates 1-3/4" to 2" O.D.; painted red	4.0	

Part Number	Description	Weight (Lbs.)	
SP1610060	Gate wheel; allows gate to open and close with ease; prevents gate sag; Round tube gates 1-5/8" to 2" O.D.; painted blue	4.1	
SP1611170	Tall gate wheel; for gates with high ground clearance; fits round tube gates 1-5/8" - 2"	8.0	
SP1610080	Gate hinge; designed for round tube gates with 1-5/8" to 1-3/4" O.D.; 5/8" diameter x 6" long bolts; jit includes upper and lower hinges and mounting hardware	2.6	
SP1610090	Gate hinge designed for round tube gates with 2" O.D.; 3/4" diameter x 12" long bolts; kit includes upper and lower hinges and mounting hardware	5.9	
SP1610180	Gate closer; adjustable; cable will adjust to fit most posts; designed to accept a padlock; powder coated corrosion resistant finish.	5.0	

Fence Accessories

Part Number	Description	Weight (Lbs.)
SP1610190	Gate closer; fits posts up to 5: diameter; accepts padlock; powder coat corrosion resistant finish	5.0
SP1611010	Heavy duty post pounder; 23-1/4" long	17
SP1611020	Spring post pounder; spring inside unit pushes it upwards after impact; reduces the effort involved in driving steel posts.	17
FX05520	Standard post pounder; 29-1/2" long; black	12
SP16117200	Heavy duty post pounder; easy to grip handles; heavy duty steel construction.	30
SP1611600	T-post puller for removal of studded "T" posts; easy one man operation pulls posts straight out of the ground without bending or twisting	17
SP1611040	T-Post Puller; use with tractor bucket, chain, Handyman Jack or S-hook; simple and quick to use	2.3
SP1611100	Wire gripper; holds wire in place for fencing maintenance; works with barbed wire, smooth wire and small cable	6.3
SP1611150	Standard duty wire stretcher. Comes in a four color display box. Replacements springs SP1611180	8.3
SP1611250	Rope wire stretcher. Comes in a four color display box.	
SP1611300	Woven wire stretcher with hooks	14



Miscellaneous Accessories

Pulleys for "C" Belts

Part Number	Outside Diam.	Fits Hub Series	Fits V-Belt Style	Weight (Lbs.)
SP8502060	6"	X	C	1.92
SP8502080	8"	X	C	3.28
SP8502100	10"	X	C	5.20
SP8502120	12"	X	C	7.52



Flat Type Idler Pulleys

Part Number	Outside Diam.	Bore Size	Flat Bore Width	Weight (Lbs.)
SP8503030	1-7/8"	3/8"	3/4"	0.25
SP8503040	2-1/4"	3/8"	1"	0.40
SP8503050	2-3/4"	5/8"	7/8"	0.55
SP8503060	3-1/4"	5/8"	3/4"	0.65
SP8503070	3-1/2"	5/8"	1"	0.70
SP8503080	4"	5/8"	3/4"	0.83
SP8503020	4"	5/8"	1"	0.80



V Type Idler Pulleys

Part Number	Outside Diam.	Bore Size	Groove Width	Belt Sizes	Weight (Lbs.)
SP8503200	2-5/8"	3/8"	1/2"	4L, 3L, 3V	0.25
SP8503220	3"	5/8"	5/8"	5L, 4L, 5V	0.40
SP8503230	3-1/2"	5/8"	5/8"	5L, 4L	0.60
SP8503250	4"	5/8"	5/8"	5L, 4L	0.75
SP8503260	4-1/2"	5/8"	5/8"	5L, 4L	0.85
SP8503270	5"	5/8"	5/8"	5L, 4L	1.10



Bushings and Plugs for Idler Pulleys

Part Number	Inner Diam.	Shoulder Length	Overall Length	Outer Diam.	Weight (Lbs.)
SP8101000	3/8"	0.0	0.4	5/8"	0.03
SP8101100	3/8"	0.4	0.8	5/8"	0.06
SP8101200	1/2"	0.0	0.4	5/8"	0.02
SP8101300	1/2"	0.4	0.8	5/8"	0.05



Miscellaneous Accessories

Roller Chain Breakers

Tips are made from tool steel. Breakers are black oxide and zinc plated.

Part Number	Description	Fits	Weight (Lbs.)
FX05050	Roller Chain Breaker	#25 to #60 Chain	0.8
FX05051	Roller Chain Breaker	#60 to #100 Chain	1.5
FX05053	Replacement tip assembly	05050 Breaker	0.1
FX05054	Replacement tip assembly	05051 Breaker	0.1



5 Gallon Drum Pump

- For use with 5 gallon (20 litre) buckets
- Pumps heavy gear oils
- Extra long 58" outlet hose
- Anti-drip nozzle - drain back nozzle holder
- Stainless mesh filter

Specifications

- For use with oils up to SAE 140 gear oils, heavy lube oils, lubrication oils, synthetic oils
- 14 downstrokes displaces 1 quart
- Standard closure - 2-1/2" 8 TPI bottle thread
- Made from nylon, aluminum and mild steel, with nitrile rubber seals

Part Number	Description	Weight (Lbs.)
FX05076	5 Gallon Drum Pump	2.5



Bucket Not Included

Bead Breaker (Tire Mounting Tool)

Part Number	Description	Weight (Lbs.)
FX05500	Bead Breaker	9.85



Miscellaneous Accessories

Fuel Strainer (Sediment Bowls)

Fuel Strainers for auto, tractor, power unit and stationary engine use. Works with either gasoline or distillates. Shallow bowl strainers have brass screens. Large bowl strainers have nylon filters with 120 micron capacity. Include double shut-off needle valve (except FX04002).

Part Number	Replaces	Item	Type	Inlet	Outlet	Bulk Weight (Lbs.)	Farmpak Number	Pkg. Type	Pcs/Pkg.
FX04000	Universal	Strainer	Shallow	1/8" Female	1/8" Female	0.45	FX34000	C	1
FX04002	B	Strainer	Shallow	1/8" Female	1/8" Female	0.45	FX34002	C	1
FX04003	C	Strainer	Shallow	3/8" Male & 1/8" Female	1/8" Female	0.55	FX34003	C	1
FX04004	Universal	Strainer	Large	1/8" Female	1/8" Female	0.65	FX34004	C	1
FX04005	Universal	Strainer	Large	3/8" Male & 1/8" Female	1/8" Female	0.70	FX34005	C	1
FX04006	D	Strainer	Large	3/8" Male	1/8" Female	0.65	FX34006	C	1
FX04007	E	Strainer Fits 1953-54 NAA model tractors (ex. Kerosene)				0.60	FX34007	C	1

A - John Deere #S-AM3100T FITS: M, 40, 320, 330, 420, 430, 440, 1010

- CASE/ INTERNATIONAL HARVESTER #61782C91 FITS: Cub, Cub Lobo, A, B, Super A, AV, AI, AVI, C, Super C, 100, 130, 140, 154, 184, 185, 184 Cub, 154 Cub, 185 Loboy

B - CASE/ INTERNATIONAL HARVESTER #614421R91 FITS: 424, 2424, 444, 244

C - INTERNATIONAL HARVESTER #A31102 FITS: Case D & S Series

D - MF 505 472M91 FITS: 135 Perkins Gas, 135 Continental after SN641014694, 150 Continental, 165 Gas, 175 Gas, 180 Gas, MF20 Perkins Gas, MF30 Perkins Gas, 2135 Utility after SN646001190, 3165 Continental

- JOHN DEERE #S-AM3100T FITS: A, B

- CASE/ INTERNATIONAL HARVESTER #1370832R91 FITS: H, M, MD, 460, 560, 660, 656

E - FORD #NAA9155B & #2N9155B FITS: 9N, 2N, 8N, NAA-Jubilee

Replacement Parts

Part Number	Item	Type	Bulk Weight (Lbs.)	Farmpak Number	Pkg. Type	Pcs/Pkg.
FX04100	Brass screen	Shallow	0.05			
FX04101	Bail nut	Shallow	0.05			
FX04102	Glass bowl	Shallow	0.05	FX34102	C	1
FX04103	Gasket	Shallow	0.05			
FX04104	Bail assembly	Shallow	0.05	FX34101	C	1
FX04105	Nylon filter	Large	0.05			
FX04106	Bail nut	Large	0.05			
FX04107	Glass bowl	Large	0.05	FX34107	C	1
FX04108	Gasket	Large	0.05			
FX04109	Bail assembly	Large	0.05	FX34104	C	1
FX34100	Screen & Gasket	Shallow	0.05			
FX34105	Filter & Gasket	Large	0.05			



Display Assortments

Our most popular linkage pins and hitch pins are available in wire rack display assortments complete with vinyl header signs. These racks are suitable for countertop, pegboard or shelf displays. Many of our smaller, high volume items are available in custom carton assortments that feature the most popular sizes. Maximize your countertop sales with these proven merchandisers.

Linkage Pin Assortment

Part Number	Description	Weight (Lbs.)
FX03040	Universal linkage pin assortment on wire rack with header sign; features the most popular category 1 and 2 top link pins and draw pins; contains 4-FX00073, 4-FX00074, 3-FX00076, 3-FX03011, 4-FX00211, 4-FX00200, 3-FX03000, 3-FX03004, 3-FX03001, 3-FX00202, 4-FX03002, 3-FX03006	60.0



FX03040

Hitch Pin Assortments

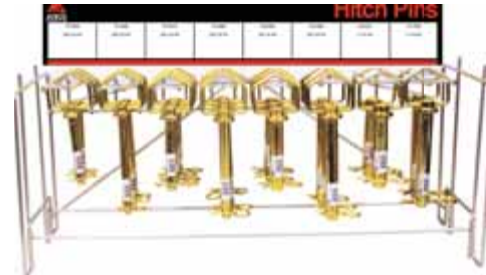
Part Number	Description	Weight (Lbs.)
FX03044	Forged hitch pin assortment on wire rack with header sign; contains 3-FX14880, 4-FX14890, 3-FX17880, 2-FX17890, 3-FX15200, 4-FX15210, 3-FX01820 and 2-FX01821	33.0
FX03048	Forged hitch pin assortment on wire rack with header sign; contains 6-FX14880, 6-FX14890, 6-FX15210, 3-FX17880 and 3-FX17890	33.0
FX03046	Red Head hitch pin assortment on wire rack with header sign; contains 6-FX01502, 8-FX01503, 8-FX01504, 4-FX01506 and 3-FX01508	50.0
FX03059	Premium hitch pin assortment on wire rack with header sign; contains 6-FX01602, 8-FX01603, 8-FX01604, 4-01606 and 3-01607	34.0
FX03050	Drop Forged hitch pin assortment on wire rack with header sign; contains 6-SP700322, 8-SP700331, 8-SP700332, 4-SP700342 and 3-SP700352	33.0
FX03052	Gray Head hitch pin assortment on wire rack with header sign; contains 6-FX01702, 8-FX01703, 8-FX01704, 4-FX01706 and 3-01708	42.0
SP7004150	Double Lok hitch pin assortment on rack with header sign; contains 1-SP7004210, 2-SP7004310, 5-SP7004320, 2-SP7004410, 5-SP7004420, 5-SP7004520, 2-SP7004620, 2-SP7004720, 1-SP7004920	80.0



SP7004150



FX03046



FX03044

Display Assortments

Bushings Assortments		
Part Number	Description	Weight (Lbs.)
FX01056	Bushing assortment in counter top display carton with emphasis on category 1-2; contains 10-FX00353, 28-FX00351, 6-FX03008, 6-FX03009 and 4-FX03010 bushings	12.5
FX01057	Bushing assortment in counter top display carton with emphasis on category 2-3; contains 8-FX00353, 14-FX00351, 6-FX03008, 10-FX03009 and 10-FX03010 bushings	13.0



FX01056

"R" Clip Pin Assortments		
Part Number	Description	Weight (Lbs.)
FX01042	"R" clip pin counter top display assortment; contains 50-FX00009, 30-FX00010, 30-FX00012, 20-FX00013, 30-FX00015, 10-FX00014 and 10-FX00019	11.7
FX01005	"R" clip pin assortment in plastic box; contains 20-FX00008, 30-FX00009, 20-FX00010, 20-FX00012, 8-FX00013 and 5-FX00015	3.7



FX01042

Clevis Pin Assortment		
Part Number	Description	Weight (Lbs.)
FX01061	Universal clevis pin counter top display assortment; contains 40-FX01100, 40-FX01101, 40-FX01102, 40-FX01103, 40-FX01104, 20-FX01105, 20-FX01106 and 20-FX01108	21.5



FX01061

Lock Pin Assortment		
Part Number	Description	Weight (Lbs.)
FX01060	Lock pin counter top display assortment; contains 8-FX00264, 8-FX00265, 28-FX00266, 8-FX00275, 8-FX00276	12.0



FX01060

Display Assortments

Lynch Pin Assortments

Part Number	Description	Weight (Lbs.)
FX01044	Lynch pin assortment counter top display; contains (15) FX03548, (15) FX02650, (20) FX02702, (30) FX02704, (15) FX02709, (20) FX03027 and (10) FX02698	14.0
FX01045	7/16" lynch pin display carton; contains (150) FX02703 7/16" standard lynch pins	16.0
FX01048	7/16" heavy duty lynch pin display carton; contains (100) FX01048 heavy duty lynch pins	30.0



FX01044

Hitch Ball Assortment

Part Number	Description	Weight (Lbs.)
FX05100	Hitch ball assortment: contains (4) FX05101, (3) FX05201, (3) FX05301 and (2) FX05501	29.0
FX05101	1-7/8" chrome hitch ball with 3/4" stud; VESC Class I	1.0
FX05201	2" chrome hitch ball with 3/4" stud; VESC Class II	1.8
FX05301	2" chrome hitch ball with 1" stud; VESC class III	2.5
FX05501	2-5/16" chrome hitch ball with 1-1/4" stud; VESC Class IV	4.0



FX05100

Wheel Spinner Assortments

Part Number	Description	Weight (Lbs.)
FX01050	Aluminum Knob, 12-Pack Display	7.8
SP2803250	Bakelite Knob, 12-Pack Display	6.6
SP2803270	Red Vinyl Coated Knob, 12-Pack Display	7.8
SP2803280	Green Vinyl Coated Knob, 12-Pack Display	7.8
SP2803290	Black Vinyl Coated Knob, 12-Pack Display	7.8
SP2803300	Blue Vinyl Coated Knob, 12-Pack Display	7.8
SP2803310	Yellow Vinyl Coated Knob, 12-Pack Display	7.8
FX01054	Mixed Color Assortment, 12-Pack Display 3-Red, 3-Green, 2-Blue, 2-Yellow, 2-Black	7.8



FX01054

Log Splitters

- Self-contained vertical/horizontal log splitters
- Briggs & Stratton and Honda Engines
- Available in 22 ton, 25 ton, 28 ton and 35 ton models
- Beam with “engineered” cylinder connection for increased strength
- Patented log cradle design for fast, easy and safe splitting in the horizontal position
- Removable cutting wedge
- Reinforced “stripper plates” remove wood from wedge
- Equipped with auto-return valves, two-stage pumps, 4.80 x 8” pneumatic tires, safety chains, ground stands, 2” ball couplers and replaceable oil filters
- 3-point hitch model also available (see following page)
- Limited Warranty: Hydraulics - 1 Year; Engine - 2 Years (MFG.); Steel Components - 3 Years



SP401622H - 22 Ton Log Splitter
with Honda 190cc engine, Shown in horizontal position.

SP401628BS-28 Ton Log Splitter with Briggs & Stratton 1450 series 342 cc engine. Shown in vertical position.



Part Number	Splitting Force (Tons)	Cycle Time (Seconds)	Pump	Engine	Beam Size	Cylinder Size	Hydraulic Capacity	Weight (Lbs.)
SP401622BS	22	14	Two-Stage 11 gpm	B & S 675 series 190 cc	6" x 9"	4" x 24"	20 Quarts	525
SP401622H	22	14	Two-Stage 11 gpm	Honda 190cc	6" x 9"	4" x 24"	6.5 Gal.	525
SP401625H	25	18	Two-Stage 11 gpm	Honda 190cc	6" x 9"	4-1/2" x 24"	6.5 Gal.	590
SP401628BS	28	12	Two-Stage 16 gpm	B & S 1450 series 342 cc	8" x 10"	4-1/2" x 24"	6.5 Gal	655
SP401628H	28	12	Two-Stage 16 gpm	Honda 240cc	8" x 10"	4-1/2" x 24"	6.5 Gal.	655
SP401635BS	35	15	Two-Stage 16 gpm	B & S 1450 series 342cc	8" x 10"	5" x 24"	6.5 Gal.	675
SP401635H	35	15	Two-Stage 16 gpm	Honda 204cc	8" x 10"	5" x 24"	6.5 Gal.	675

See pages 52 for log splitter replacement parts.

Log Splitters (3-Point Hitch)

3-point hitch log splitter for Category 1 or 2 tractors. Hooks directly into the tractor's hydraulic system. A-frame connects log splitter to the 3-point hitch of the tractor. Equipped with 4" x 24" hydraulic cylinder, auto-return valve and spool kit for converting log splitter valve from open to closed. Splitting force up to 20 tons depending on tractor. Same beam design with built-in log cradle as the gas engine log splitters. Hoses to tractor are not included.



SP400197N shown in horizontal position



SP400197N shown in vertical position

Part Number	Tractor Categories	Splitting Force*	Cycle Time*	Valve	Beam Size	Cylinder Size	Weight (Lbs.)
SP400197N	1 and 2	Depends on tractor	Depends on tractor	Auto-return	6" x 6"	4" x 24"	365

*Splitting force is determined by cylinder size and tractor PSI. Cycle time depends on cylinder size and GPM's that the tractor produces. Tractor ideally should produce 8-15 GPM at 1500 to 2500 PSI. Do not exceed 3200 PSI.

SPLITTING FORCE (tons)

Cylinder Size	1000 PSI	1500 PSI	2000 PSI	2500 PSI	3000 PSI	3500 PSI
4"	6.3	9.4	12.6	15.7	18.8	22.0

CYCLE TIME (seconds)

Cylinder Size	5 GPM	10 GPM	15 GPM	20 GPM	25 GPM
4"	28.3	14.2	9.4	7.1	5.7



CAUTION: This log splitter is designed for tractors with pressure ratings under 3200 PSI. Warranty will be voided if used on tractors that exceed pressure settings of 3200 PSI. Do not exceed the pressure rating of the cylinder and valve manufacturers.

Log Splitter Accessories

Part Number	Description	Weight (Lbs.)
SP4014160	Log Catcher saves time and reduces back strain when splitting wood. Increases efficiency by reducing bending time to pick up split logs. Holds the split log until you're ready to quarter it. Fits late 2006 and after SpeeCo log splitter models only.	12
SP4701100	Log jack takes the effort out of lifting logs. Holds log up to 8" off the ground for clean and safe cutting. Handles logs from 3" to 15" diameters. Painted green.	14
SP4702020	Sledge Hammer with carbon steel, octagonal shaped head on both sides. Steel handles for striking wood and log splitting wedges.	16
SP4702010	Splitting Maul has carbon steel head with one end, in an octagonal shape, and on the opposite end, flattened to form a tapered, curved and sharpened bit. Axe head is intended specifically for splitting logs and the striking face for driving log splitting wedges.	12
SP4014420	Slip-on, 4-way log splitter wedge. Fits 22, 25, 27 and 28 ton log splitters with 7" wedge. For horizontal operation only.	6.6
SP4014430	Slip-on, 4-way wedge for log splitters. Fits 34 and 35 ton log splitters with 7" wedge. For horizontal operation only.	5.6



Log Splitter Replacement Parts

Part Number	Description
SP390118	4" x 24" Hydraulic cylinder for SP401622BS log splitter
SP39024600	1/2" x 44" Hydraulic pressure hose for SP401622BS log splitter
SP39025200	3/4" x 52" Hydraulic return hose for SP401622BS log splitter
SP39026800	3/4" x 12" Suction hose for SP401622BS log splitter
SP39037500	Dipstick/breather cap for SP401622BS log splitter
SP390601	Filter element for all models
SP390604	Filter base for all models
SP390406S	Hydraulic valve for all models except SP401625H log splitter
SP390705	11 GPM hydraulic pump for SP401622BS, SP401622H and SP401625H log splitters
SP400312	Tire and wheel for all models
SP40034600	Hitch ball coupler assembly for all models
SP400833	Jaw coupler, 1/2" bore for 22 and 25 ton log splitters
SP400835	Jaw coupler, 3/4" bore SP401625H and SP401622H log splitters
SP400834	Rubber coupler spider 22 ton and 25 ton log splitters
SP400838	Jaw coupler, 7/8" for SP401622BS log splitter
SP40141700	Wedge for 22 ton - 25 ton log splitter models
SP40115500	Hardware kit for SP401622BS log splitter
SP39027300	1" x 14-1/4" Suction hose for SP401622H log splitter
SP39027400	3/4" x 56" Hydraulic return hose for SP401622H, SP401625H, SP401628BS, SP401628H, and SP401635BS

Part Number	Description
SP39027500	1/2" x 38" Hydraulic pressure hose for SP401622H, SP401625H, SP401628H, SP401635BS, and SP401635H
SP40115400	Hardware kit for SP401622H log splitter
SP390119	4-1/2" x 24" Hydraulic cylinder for SP401625H, SP401628H, and SP401628BS
SP390406	Hydraulic valve for SP401625H log splitter
SP39037600	Dipstick/breather cap for SP401625H
SP39070900	16 GPM hydraulic pump for 28 ton-35 ton models
SP40081200	Pump mount for all models except SP401622BS
SP400825	Jaw coupler, 1" bore for 28-35 ton log splitters
SP400826	Jaw coupler, 1/2" bore for 28-35 ton log splitters
SP400827	Rubber coupler spider for 28-35 ton log splitters
SP40141800	Wedge for SP401628BS, SP401628H, SP401635BS, and SP401635H models
SP390117	5" x 24" Hydraulic cylinder for SP401635BS and SP401635H log splitters
SP40142200	Fender for all models
SP40116800	Hardware kit for SP401635BS and SP401635H log splitters
SP39026300	1/2" x 27" Hydraulic hose for SP400197N log splitter
SP40016300	3-Point A-frame for SP400197N log splitter
SP390406S3	Hydraulic valve for SP400197N log splitter
SP390441	Closed spool kit for valve SP400197N log splitter

Refer to the log splitter owner's manual before ordering replacement parts.



SP39070900



SP390118



SP40141700



SP390406

Post Hole Diggers

- For use with Subcompact, Category 0 or 1 tractors (540 RPM maximum PTO operating speed)
- 3:1 Ratio Gear Box, 2" output shaft to accept common augers
- Driveline equipped with quick-tach yoke to fit standard 6-spline PTO (completely shielded)
- Augers available in 6", 9" and 12" diameters (sold separately)
- Anti-auger plates prevent screwing into soft soils
- High-strength 2-7/8" O.D. tubing on boom and A-frame
- Boom has multiple holes for height adjustment
- Equipped with shear pin on input shaft to protect driveline, auger and gears
- Replaceable screw point and beveled, high carbon steel cutting edges



Compact Post Hole Digger

Part Number	Description	Weight (Lbs.)
SP2404500	Post Hole digger for Subcompact, Category 0 or 1 tractors	80.0
SP2405460	6" auger with screw point and cutting edges for Compact Digger	21.0
SP2405470	9" auger with screw point and cutting edges for Compact Digger	32.0
SP2405440	12" auger with screw point and cutting edges for Compact Digger	43.0
SP2405920	Screw point	2.8
SP2405670	6" cutting edge	0.3
SP2405770	9" outer cutting edge	0.5
SP2405780	9" inner cutting edge	0.5
SP2405870	12" outer cutting edge	0.7
SP2405880	12" inner cutting edge	.75
SP240567ZB	6" cutting edge set - Bag (2)	1.2
SP240579ZB	9" cutting edge set - Bag (2)	2.0
SP240589ZB	12" cutting edge set - Bag (2)	3.2
SP2408650	Optional Weight Mount Kit (weights sold separately)	9.8
SP240783	Gear box bearing and seal kit	0.3
SP24116000	Driveline	18.0
SP24075500	Gear box with shield	40.0
SP24084100	Control rod	3.5
SP24116300	Driveline guard assembly	5.0
SP24073800	Gear box shield	2.0
SP24073900	Output shaft shield	2.0
SP24087600	Canister for Owner's manual	1.0

Post Hole Diggers

- For use with Category 1 or 2 tractors (540 RPM maximum PTO operating speed)
- Special alloy pinon gears and tapered roller bearing on both sides of each gear
- Driveline equipped with quick-tach yoke to fit standard 6-spline PTO (completely shielded)
- Augers available in 6", 9" and 12" diameters that all dig to a depth of 45" (sold separately)
- Anti-auger plates prevent screwing into soft soils
- High-strength 2-7/8" O.D. tubing on boom and A-frame
- Boom has multiple holes for height adjustment
- Equipped with shear pin on input shaft to protect driveline, auger and gears
- Replaceable screw point and beveled, high carbon steel cutting edges



Model 65 Post Hole Digger		
Part Number	Description	Weight (Lbs.)
SP2404400	Post Hole digger for Category 1 or 2 tractors. Equipped with heavy duty gear box. 2-7/8" O.D. high strength tubing for boom and A-frame	140.0
SP240515A	6" auger with screw point and replaceable high-carbon steel cutting edges	28.0
SP240525A	9" auger with screw point and replaceable high-carbon steel cutting edges	34.0
SP2405290	9" Heavy Duty auger with screw point and replaceable high-carbon steel cutting edges	43.0
SP240535A	12" auger with screw point and replaceable high-carbon steel cutting edges	55.0
SP2405360	12" Heavy Duty auger with screw point and replaceable high-carbon steel cutting edges	57.0
SP2405920	Screw point with 1-1/4" NC threads	2.8
SP2405670	6" cutting edge	0.3
SP2405770	9" outer cutting edge	0.5
SP2405780	9" inner cutting edge	0.5
SP2405870	12" outer cutting edge	0.8
SP2405880	12" inner cutting edge	0.8
SP240567ZB	6" cutting edge set - Bag (2)	1.2
SP240579ZB	9" cutting edge set - Bag (2)	2.0
SP240589ZB	12" cutting edge set - Bag (2)	3.2
SP2408650	Optional Weight Mount Kit (weights sold separately)	9.8
SP240701A	Gear Box for Model 65 Digger with shields	47.0
SP24084100	Control rod	3.5
SP24116000	Driveline	18.0
SP24116300	Driveline guard assembly	5.0
SP24070700	Output shaft shield	2.0
SP24075100	Input shaft shield	2.0
SP24087600	Canister for owner's manual	1.0

Post Hole Diggers

- For use with Category 1 or 2 tractors (540 RPM maximum PTO operating speed)
- Special alloy pinon gears and tapered roller bearing on both sides of each gear
- Driveline equipped with quick-tach yoke to fit standard 6-spline PTO (completely shielded)
- Augers available in 6", 9", 12", 18" and 24" diameters (sold separately)
- Boom has 3-1/4" O.D. tube and tapered rib with multiple holes for height adjustment
- A-frame has 3-1/4" O.D. tube and cast steel ears and rounded ends
- Equipped with shear pin on input shaft to protect driveline, auger and gears
- Replaceable spiral point and carbide cutting edges

Heavy Duty Post Hole Digger		
Part Number	Description	Weight (Lbs.)
SP2404600	Heavy Duty Post Hole digger for Category 1 or 2 tractors	235.0
SP2412110	6" auger with spiral point and carbide cutting edges	21.0
SP2412140	9" auger with spiral point and carbide cutting edges	42.0
SP2405290	9" Heavy Duty auger with screw point and replaceable high-carbon steel cutting edges	43.0
SP2412170	12" auger with spiral point and carbide cutting edges	60.0
SP2405360	12" Heavy Duty auger with screw point and replaceable high-carbon steel cutting edges	57.0
SP2405480	18" auger with spiral point and carbide cutting edges	99.0
SP2405490	24" auger with spiral point and carbide cutting edges	125.0
SP2412190	Spiral point for 6", 9", 12", 18" and 24" carbide augers	1.4
SP2412220	2" carbide cutting edge for 6", 9", 12", 18" and 24" carbide augers	1.9
SP2405920	Screw point with 1-1/4" NC threads for 9" and 12" Heavy Duty augers	2.8
SP2405770	9" outer cutting edge for 9" Heavy Duty augers	0.5
SP2405780	9" inner cutting edge for 9" Heavy Duty augers	0.5
SP2405870	12" outer cutting edge for 12" Heavy Duty augers	0.8
SP2405880	12" inner cutting edge for 12" Heavy Duty augers	0.8
SP240579ZB	9" cutting edge set - Bag (2) for 9" Heavy Duty augers	2.0
SP240589ZB	12" cutting edge set - Bag (2) for 12" Heavy Duty augers	3.2
SP2408650	Optional Weight Mount Kit (weights sold separately)	9.8
SP2404560	Optional Hydraulic Downforce Kit	44.0
SP24075400	Gear box with shield	56.0
SP24117000	Driveline with shield	18.0
SP24075300	Output shaft shield	2.0
SP24075200	Input shaft shield	2.0
SP24087600	Canister for owner's manual	



Front Mount Quick Hitch

The Front Mount Quick Hitch will fit on any skid steer loader or tractor that has a skid steer compatible quick attach system. One side has a skid steer quick attach plate, while the other side has ASAE quick attach fittings to allow the use of Cat. 1 3-point equipment on the front of the tractor. Fittings are similar in shape and identical in function to our Cat. 1 Quick Hitch, allowing quick changing of implements. For use with box blades, landscape rakes, bale forks and much more.

Part Number	Description	Weight (Lbs.)
SP1411100	Front Mount Quick Hitch. Fits most skid steer loaders or tractors with skid steer compatible quick attach system.	125
SP3602010	Skid Steer Blank. Build any implement for a skid steer with this blank.	50



Easy attachment: Simply lower, lift and lock.



UltraFork

The Ultra Fork easily lifts debris and objects around the workplace and home. Three to five tines are perfect for round or square hay bales. Seven tines for unlimited applications including wood, manure, rock and more. The Ultra Fork mounts to a quick hitch, a 3-point hitch system or a skid steer quick attach system. It combines the functionality of a pallet fork, manure fork, silage fork, rock fork and more.

Part Number	Description	Weight (Lbs.)
SP33030300	Ultra Fork multi-function implement with three tines and two lift arm pins.	150
SP33030500	32" Tine	13



Index

Part Number	Page	Part Number	Page	Part Number	Page	Part Number	Page	Part Number	Page
FX00007	18	FX00952	31	FX01602	13	FX02702	20	FX03474	2
FX00008	18	FX00953	31	FX01603	13	FX02704	20	FX03477	2
FX00009	18	FX00954	31	FX01604	13	FX02709	20	FX03510	7
FX00010	18	FX00955	31	FX01605	13	FX03000	11	FX03530	7
FX00012	18	FX00956	31	FX01606	13	FX03001	11	FX03548	20
FX00013	18	FX00957	31	FX01607	13	FX03002	11	FX04000	45
FX00014	18	FX01005	47	FX01608	13	FX03004	11	FX04002	45
FX00015	18	FX01516	14	FX01609	13	FX03005	11	FX04003	45
FX00017	18	FX01042	47	FX01700	15	FX03006	11	FX04004	45
FX00017	25	FX01044	48	FX01701	15	FX03007	11	FX04005	45
FX00019	18	FX01045	48	FX01702	15	FX03008	7	FX04006	45
FX00056	5	FX01048	48	FX01703	15	FX03009	7	FX04007	45
FX00057	5	FX01050	48	FX01704	15	FX03010	7	FX04100	45
FX00073	12	FX01054	48	FX01705	15	FX03011	11	FX04101	45
FX00074	12	FX01056	47	FX01706	15	FX03012	7	FX04102	45
FX00076	12	FX01057	47	FX01707	15	FX03013	7	FX04103	45
FX00077	12	FX01060	47	FX01708	15	FX03015	7	FX04104	45
FX00152	9	FX01061	47	FX01710	15	FX03016	7	FX04105	45
FX00159	9	FX01100	19	FX01712	15	FX03022	11	FX04106	45
FX00160	9	FX01101	19	FX01714	15	FX03026	11	FX04107	45
FX00169	10	FX01102	19	FX01820	13	FX03027	20	FX04108	45
FX00173	9	FX01103	19	FX01821	13	FX03031	9	FX04109	45
FX00174	9	FX01104	19	FX02200	20	FX03032	9	FX04950	2
FX00176	9	FX01105	19	FX02201	20	FX03033	9	FX04951	2
FX00177	9	FX01106	19	FX02202	20	FX03039	9	FX05050	44
FX00178	90	FX01107	19	FX02203	20	FX03040	46	FX05051	44
FX00200	11	FX01108	19	FX02204	20	FX03044	46	FX05053	44
FX00202	11	FX01109	19	FX02205	20	FX03046	46	FX05054	44
FX00211	11	FX01110	19	FX02215	20	FX03048	46	FX05070	32
FX00213	11	FX01145	39	FX02250	7	FX03050	46	FX05076	44
FX00264	21	FX01189	37	FX02251	7	FX03052	46	FX05100	48
FX00265	21	FX01338	6	FX02252	7	FX03054	5	FX05101	48
FX00266	21	FX01342	6	FX02253	7	FX03055	5	FX05201	48
FX00275	21	FX01344	6	FX02254	7	FX03056	5	FX05301	48
FX00276	21	FX01351	6	FX02255	7	FX03057	5	FX05500	44
FX00310	6	FX01352	6	FX02260	10	FX03059	46	FX05501	48
FX00311	6	FX01410	17	FX02262	7	FX03107	9	FX05520	42
FX00330	2	FX01411	17	FX02266	20	FX03108	18	FX09697	31
FX00332	2	FX01412	17	FX02270	5	FX03109	18	FX10412	8
FX00335	2	FX01500	14	FX02276	20	FX03110	18	FX11032	36
FX00337	2	FX01501	14	FX02277	5	FX03112	18	FX11033	36
FX00338	2	FX01502	14	FX02278	5	FX03113	18	FX11034	36
FX00339	2	FX01503	14	FX02279	5	FX03114	18	FX11035	36
FX00340	2	FX01504	14	FX02282	5	FX03115	18	FX11036	36
FX00342	2	FX01506	14	FX02283	39	FX03116	18	FX11037	36
FX00343	2	FX01508	14	FX02310	19	FX03119	18	FX11038	36
FX00346	2	FX01510	14	FX02311	19	FX03132	9	FX11039	36
FX00347	2	FX01512	14	FX02312	19	FX03133	9	FX11040	36
FX00351	7	FX01514	14	FX02313	19	FX03134	9	FX11041	36
FX00353	7	FX01515	14	FX02314	19	FX03137	10	FX11042	36
FX00480	2	FX01516	14	FX02316	19	FX03169	10	FX11043	36
FX00486	2	FX01542	33	FX02646	20	FX03173	12	FX11044	36
FX00500	8	FX01544	33	FX02647	20	FX03178	11	FX14880	13
FX00501	37	FX01545	33	FX02648	20	FX03244	2	FX14881	13
FX00611	9	FX01600	13	FX02650	20	FX03470	2	FX14890	13
FX00948	37	FX01601	13	FX02698	20	FX03473	2	FX14891	13

Index

Part Number	Page	Part Number	Page	Part Number	Page	Part Number	Page	Part Number	Page
FX14895	16	FX18648	29	FX32315	19	FX39899	31	SP160801ZB	39
FX15124	17	FX18649	29	FX32316	19	SP100101N	34	SP1608020	39
FX15142	17	FX18650	29	FX32317	19	SP100102N	34	SP160802ZB	39
FX15143	17	FX18651	29	FX32318	19	SP100103N	34	SP1608030	39
FX15162	17	FX18652	29	FX32319	19	SP100104N	34	SP160803ZB	39
FX15163	17	FX18653	29	FX32320	19	SP1001500	34	SP1608040	39
FX15180	13	FX18654	29	FX32410	37	SP1001510	34	SP160804ZB	39
FX15182	17	FX18812	30	FX33008	7	SP100201N	34	SP1608050	39
FX15183	17	FX18813	30	FX33009	7	SP100204N	34	SP160805ZB	39
FX15190	13	FX18814	30	FX33010	7	SP1003010	34	SP1608060	39
FX15195	16	FX18815	30	FX33014	7	SP1003020	34	SP160806ZB	39
FX15200	13	FX18816	30	FX33016	7	SP1003030	34	SP1608070	39
FX15201	13	FX18834	30	FX33027	20	SP1003040	34	SP160807ZB	39
FX15205	16	FX18835	30	FX33054	5	SP1004010	34	SP1608080	39
FX15210	13	FX22131	13	FX33055	5	SP100402	34	SP160808ZB	39
FX15211	13	FX30017	33	FX33056	5	SP1004150	34	SP1608090	39
FX15215	16	FX30056	5	FX33057	5	SP100202N	34	SP160809ZB	39
FX17101	12	FX30057	5	FX33108	18	SP100901ZA	37	SP1608110	39
FX17102	12	FX30098	31	FX33109	18	SP1011010	35	SP160811ZB	39
FX17103	12	FX30099	31	FX33110	18	SP1011020	35	SP1608120	39
FX17104	12	FX30310	6	FX33112	18	SP1011030	35	SP160812ZB	39
FX17105	12	FX30311	6	FX33113	18	SP1011040	35	SP1608130	39
FX17880	13	FX30948	37	FX33114	18	SP1011050	35	SP160813ZB	39
FX17881	13	FX30952	31	FX33115	18	SP1011060	35	SP1608150	39
FX17885	13	FX30953	31	FX33116	18	SP1011070	35	SP160815ZA	39
FX17890	13	FX30954	31	FX33119	19	SP1011080	35	SP1608160	39
FX17891	13	FX30955	31	FX34000	45	SP1011090	35	SP160816ZA	39
FX17895	16	FX30956	31	FX34001	45	SP1011100	35	SP1608170	39
FX17900	13	FX30957	31	FX34002	45	SP1011110	35	SP160817ZA	39
FX17901	13	FX31189	37	FX34003	45	SP1011120	35	SP1608190	39
FX18000	13	FX31338	6	FX34004	45	SP1011130	35	SP160819ZA	39
FX18001	13	FX31342	6	FX34005	45	SP1011140	35	SP1608210	39
FX18134	28	FX32202	20	FX34006	45	SP1011150	35	SP160821ZA	39
FX18158	28	FX32203	20	FX34007	45	SP1011160	35	SP1608230	39
FX18178	28	FX32204	20	FX34100	45	SP1011170	35	SP160823ZA	39
FX18187	28	FX32205	20	FX34101	45	SP1011180	35	SP1608260	39
FX18190	28	FX32206	20	FX34102	45	SP1011190	35	SP160826ZA	39
FX18195	28	FX32207	20	FX34104	45	SP1011200	35	SP1608510	31
FX18234	28	FX32213	20	FX34105	45	SP10112200	35	SP1609120	36
FX18258	28	FX32215	20	FX34107	45	SP1050300	33	SP1609130	36
FX18278	28	FX32250	7	FX38546	29	SP10541GT	33	SP1610010	41
FX18287	28	FX32252	7	FX38547	29	SP1054800	33	SP1610020	41
FX18290	28	FX32255	7	FX38548	29	SP10641YB	37	SP1610030	41
FX18295	28	FX32260	10	FX38549	29	SP10641ZB	37	SP1610050	41
FX18465	28	FX32264	21	FX38550	29	SP10642A0	37	SP1610060	41
FX18546	29	FX32265	21	FX38551	29	SP1090700	2	SP1610070	41
FX18547	29	FX32266	21	FX38605	30	SP1411100	56	SP1610080	41
FX18548	29	FX32269	21	FX38606	30	SP1604010	37	SP1610090	41
FX18549	29	FX32275	21	FX38608	30	SP1606190	39	SP1610180	41
FX18550	29	FX32276	21	FX38646	29	SP1606190	39	SP1610190	42
FX18551	29	FX32283	39	FX38647	29	SP160619YA	39	SP1610600	40
FX18605	30	FX32310	19	FX38648	29	SP1606250	39	SP1610600	40
FX18606	30	FX32311	19	FX38649	29	SP160625YA	39	SP1610610	40
FX18608	30	FX32312	19	FX38650	29	SP1606260	39	SP1610620	40
FX18646	29	FX32313	19	FX38651	29	SP160625YA	39	SP1610630	40
FX18647	29	FX32314	19	FX38652	29	SP1608010	39	SP1610640	40

Index

Part Number	Page	Part Number	Page	Part Number	Page	Part Number	Page	Part Number	Page
SP1610650.....	40	SP175070.....	24	SP175186.....	25	SP2405490.....	55	SP390441.....	52
SP1610660.....	40	SP175071.....	24	SP175190.....	24	SP2405670.....	53,54	SP390601.....	52
SP1610670.....	40	SP175072.....	24	SP175191.....	24	SP240567ZB.....	53,54	SP390604.....	52
SP1610680.....	40	SP175073.....	24	SP175192.....	24	SP2405770.....	53-55	SP390705.....	52
SP1610690.....	40	SP175074.....	24	SP175193.....	24	SP2405780.....	53-55	SP39070900.....	52
SP1610700.....	40	SP175075.....	24	SP175195.....	24	SP240579Z.....	53-55	SP3908110.....	37
SP1610710.....	40	SP175090.....	27	SP175196.....	24	SP23405870.....	53-55	SP3910200.....	31
SP1610720.....	40	SP175093.....	27	SP175230.....	24	SP2405880.....	53-55	SP40016300.....	52
SP1610730.....	40	SP175101.....	27	SP175231.....	24	SP240589Z.....	53-55	SP400197N.....	50
SP1610740.....	40	SP175106.....	27	SP175233.....	24	SP2405920.....	53-55	SP400312.....	52
SP1610750.....	40	SP175108.....	27	SP175234.....	24	SP240701A.....	54	SP40034600.....	52
SP1610760.....	40	SP175109.....	27	SP175235.....	24	SP24070700.....	54	SP40081200.....	52
SP1610770.....	40	SP175112.....	27	SP175236.....	24	SP24073800.....	53	SP400825.....	52
SP1610780.....	40	SP175114.....	27	SP175237.....	24	SP24073900.....	53	SP400826.....	52
SP1610790.....	40	SP175130.....	26	SP175238.....	24	SP24075100.....	54	SP400827.....	52
SP1611010.....	42	SP175131.....	26	SP2010100.....	3	SP24075200.....	55	SP400833.....	52
SP1611020.....	42	SP175132.....	26	SP2010200.....	3	SP24075300.....	55	SP400834.....	52
SP1611100.....	42	SP175133.....	26	SP2010300.....	3	SP24075400.....	55	SP400835.....	52
SP1611130.....	42	SP175134.....	26	SP2010400.....	3	SP24075500.....	53	SP400838.....	52
SP1611150.....	42	SP175135.....	26	SP2010500.....	3	SP24078300.....	53	SP40115400.....	52
SP16117200.....	42	SP175136.....	26	SP2010600.....	3	SP24084100.....	54	SP40115500.....	52
SP1611180.....	42	SP175137.....	26	SP2020100.....	4	SP2408650.....	53-54	SP40116800.....	52
SP1611250.....	42	SP175138.....	26	SP2020200.....	4	SP24087600.....	53-55	SP40141700.....	52
SP1611600.....	42	SP175139.....	26	SP2020300.....	4	SP24116000.....	53-54	SP40141800.....	52
SP1613200.....	36	SP175140.....	26	SP2020400.....	4	SP24116300.....	53-54	SP40142200.....	52
SP161320B.....	36	SP175141.....	26	SP2020500.....	3	SP24117000.....	55	SP401622BS.....	49
SP1613250.....	36	SP175142.....	26	SP2020700.....	3	SP2412110.....	55	SP401622H.....	49
SP161325B.....	36	SP175143.....	26	SP2020800.....	3	SP2412140.....	55	SP401625H.....	49
SP175010.....	23	SP175144.....	26	SP202100.....	4	SP241270.....	55	SP401628BS.....	49
SP175011.....	23	SP175145.....	26	SP2021500.....	4	SP241290.....	55	SP401628H.....	49
SP175012.....	23	SP175146.....	26	SP2021600.....	4	SP2412220.....	55	SP401635BS.....	49
SP175013.....	23	SP175147.....	26	SP2021900.....	3	SP2803250.....	48	SP401635H.....	49
SP175014.....	23	SP175148.....	26	SP2022000.....	3	SP2803270.....	48	SP4014160.....	51
SP175015.....	23	SP175149.....	26	SP2022500.....	3, 4	SP2803280.....	48	SP4701060.....	32
SP175016.....	23	SP175150.....	26	SP2022600.....	3, 4	SP2803290.....	48	SP4701070.....	32
SP175017.....	23	SP175151.....	26	SP2022900.....	3	SP2803300.....	48	SP4701080.....	32
SP175018.....	23	SP175152.....	26	SP2023000.....	3	SP2803310.....	48	SP4701100.....	51
SP175020.....	23	SP175153.....	26	SP2023100.....	4	SP28033800.....	34	SP4702010.....	51
SP175021.....	23	SP175154.....	26	SP2023200.....	4	SP33030300.....	56	SP4702020.....	51
SP175022.....	23	SP175155.....	26	SP2030100.....	4	SP33030500.....	56	SP4904100.....	29
SP175023.....	23	SP175156.....	26	SP2030200.....	4	SP3602010.....	56	SP4904100.....	29
SP175024.....	23	SP175171.....	25	SP2030300.....	4	SP390117.....	52	SP4905040.....	30
SP175025.....	23	SP175172.....	25	SP2030500.....	3	SP390118.....	52	SP502010.....	9
SP175026.....	23	SP175173.....	25	SP2030600.....	3	SP390119.....	52	SP5602160.....	38
SP175050.....	25	SP175174.....	25	SP2404400.....	54	SP39024600.....	52	SP5602170.....	38
SP175051.....	25	SP175175.....	25	SP2404500.....	53	SP39025200.....	52	SP5602180.....	38
SP175052.....	25	SP175176.....	25	SP2404560.....	55	SP39026300.....	52	SP5602190.....	38
SP175053.....	25	SP175177.....	25	SP2404600.....	55	SP39026800.....	52	SP5602200.....	38
SP175054.....	25	SP175178.....	25	SP240515A.....	54	SP39027300.....	52	SP5602210.....	38
SP175055.....	25	SP175179.....	25	SP240525A.....	54	SP39027400.....	52	SP5602310.....	38
SP175056.....	25	SP175180.....	25	SP240535A.....	54	SP39027500.....	52	SP5602320.....	38
SP175057.....	25	SP175181.....	25	SP2405360.....	54,55	SP39037500.....	52	SP5602330.....	38
SP175058.....	25	SP175182.....	25	SP2405440.....	53	SP39037600.....	52	SP5602340.....	38
SP175059.....	25	SP175183.....	25	SP2405460.....	53	SP390406.....	52	SP5602360.....	38
SP175060.....	25	SP175184.....	25	SP240547.....	53	SP390406S.....	52	SP5602400.....	38
SP175113.....	25	SP175185.....	25	SP2405480.....	55	SP390406S3.....	52	SP5602420.....	38

Index

Part Number	Page	Part Number	Page	Part Number	Page	Part Number	Page	Part Number	Page
SP5602450.....	38	SP7022800.....	1	SP70952ZB.....	21	SP71042WC.....	15	SP7128100.....	22
SP5602470.....	38	SP7023100.....	10	SP7095300.....	21	SP71052WC.....	15	SP7128200.....	22
SP5602480.....	38	SP7023400.....	10	SP70953ZB.....	21	SP71062WC.....	15	SP7128300.....	22
SP5602490.....	38	SP7023500.....	10	SP7095400.....	21	SP7111400.....	17	SP7128400.....	22
SP5602510.....	38	SP7023700.....	10	SP70954ZB.....	21	SP7111500.....	17	SP7128600.....	22
SP6020600.....	9	SP7023900.....	10	SP7095500.....	21	SP7111700.....	17	SP8020800.....	7
SP6020700.....	9	SP7024400.....	11	SP70955ZB.....	21	SP7111800.....	17	SP80208ZB.....	7
SP6025100.....	9	SP7024700.....	11	SP7095600.....	21	SP7112000.....	17	SP8020900.....	7
SP6025200.....	9	SP7024800.....	11	SP70956ZB.....	21	SP7112200.....	17	SP80209ZA.....	7
SP604030.....	9	SP7040200.....	8	SP7095700.....	21	SP7112300.....	17	SP80220ZA.....	7
SP604220.....	9	SP70417ZB.....	19	SP7957ZB.....	21	SP7112600.....	17	SP80221ZB.....	7
SP7002040.....	16	SP70418ZB.....	19	SP7095800.....	21	SP7112700.....	17	SP80320ZB.....	7
SP7002110.....	16	SP70419ZB.....	19	SP70958ZB.....	21	SP7112900.....	17	SP8101000.....	43
SP7003210.....	16	SP70420ZB.....	19	SP7095900.....	21	SP7113000.....	17	SP8101100.....	43
SP7003220.....	16	SP70421ZB.....	19	SP70959ZB.....	21	SP7120200.....	22	SP8101200.....	43
SP7003310.....	16	SP7071000.....	10	SP7096000.....	21	SP7120400.....	22	SP8101300.....	43
SP7003320.....	16	SP7071200.....	33	SP70960ZB.....	21	SP7120600.....	22	SP8502060.....	43
SP7003410.....	16	SP7071300.....	33	SP7096100.....	21	SP7120800.....	22	SP8502080.....	43
SP7003420.....	16	SP7071900.....	12	SP70961ZB.....	21	SP7121200.....	22	SP8502100.....	43
SP7003510.....	16	SP7072000.....	12	SP7096300.....	21	SP7121400.....	22	SP8502120.....	43
SP7003520.....	16	SP7073100.....	33	SP70963ZB.....	21	SP7121600.....	22	SP8503020.....	43
SP7003620.....	16	SP7073600.....	33	SP70964ZB.....	21	SP7121800.....	22	SP8503040.....	43
SP7003720.....	16	SP7074300.....	33	SP7096500.....	21	SP7122000.....	22	SP8503050.....	43
SP7003820.....	16	SP7074400.....	33	SP7096600.....	21	SP7122200.....	22	SP8503060.....	43
SP7003920.....	16	SP7075000.....	33	SP70966ZB.....	21	SP7122400.....	22	SP8503070.....	43
SP7004150.....	46	SP7080800.....	10	SP7096700.....	21	SP7122700.....	22	SP8503080.....	43
SP7004210.....	14	SP70901ZJ.....	20	SP70967ZB.....	21	SP7122900.....	22	SP8503200.....	43
SP7004310.....	14	SP7091600.....	20	SP7099500.....	18	SP7123100.....	22	SP8503220.....	43
SP7004320.....	14	SP70916ZB.....	20	SP70995YF.....	18	SP7123300.....	22	SP8503230.....	43
SP7004410.....	14	SP70902ZB.....	20	SP7099600.....	18	SP7123400.....	22	SP8503250.....	43
SP7004420.....	14	SP7092200.....	18	SP70996YE.....	18	SP7123600.....	22	SP8503260.....	43
SP7004520.....	14	SP70922YI.....	18	SP70996ZB.....	18	SP7123700.....	22	SP8503270.....	43
SP7004620.....	14	SP70922ZJ.....	18	SP7099700.....	18	SP7123900.....	22	SP9007010.....	32
SP7004620.....	14	SP7092900.....	18	SP70997YB.....	18	SP7124600.....	22	SP9007020.....	32
SP7004720.....	14	SP7093800.....	21	SP7100000.....	12	SP7124800.....	22	SP9007030.....	32
SP7004920.....	14	SP70938YB.....	21	SP71010C0.....	13	SP7125000.....	22	SP9007050.....	32
SP7005410.....	14	SP70938ZB.....	21	SP71011C0.....	13	SP7125200.....	22	SP9007060.....	32
SP7005510.....	14	SP70941ZB.....	21	SP71011WC.....	15	SP7125300.....	22	SP9007070.....	32
SP7005530.....	14	SP7094700.....	21	SP71012C0.....	13	SP7125500.....	22	SP9007080.....	32
SP7005730.....	14	SP70947ZB.....	21	SP71012CL.....	13	SP7125700.....	22	SP9007090.....	32
SP7005830.....	14	SP7094800.....	21	SP71021WC.....	15	SP7126500.....	22	SP9007100.....	32
SP7010100.....	10	SP70948ZB.....	21	SP71022WC.....	15	SP7126700.....	22	SP9007120.....	32
SP7020900.....	11	SP7095000.....	21	SP71022WC.....	15	SP7126900.....	22	SP9007140.....	32
SP7021100.....	11	SP70950ZB.....	21	SP71031WC.....	15	SP7127100.....	22	SP9007150.....	32
SP7022100.....	1	SP70951ZB.....	21	SP71032WC.....	15	SP7127300.....	22		
SP7022400.....	11	SP7095200.....	21	SP71041WC.....	15	SP7128000.....	22		